

## \$450,000 - 134 Garneau Gate, Spruce Grove

MLS® #E4427718

**\$450,000**

3 Bedroom, 2.50 Bathroom, 1,604 sqft

Single Family on 0.00 Acres

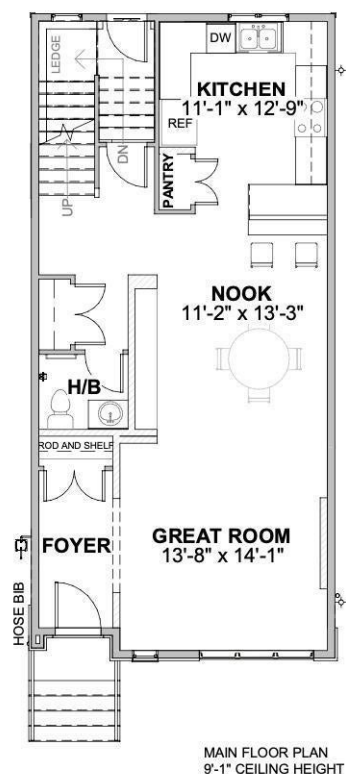
Greenbury, Spruce Grove, AB

Welcome to this charming two-storey home in the desirable community of Greenbury, Spruce Grove. The main floor features a cozy living room, a bright dining area, a functional kitchen, and a convenient 2-piece bathroom. Upstairs, you'll find the primary bedroom complete with a walk-in closet and a 4-piece ensuite, two additional bedrooms, a laundry room, and another 4-piece bathroom. This home offers a perfect blend of comfort and convenience in a family-friendly neighborhood.

Built in 2025

### Essential Information

MLS® #	E4427718
Price	\$450,000
Bedrooms	3
Bathrooms	2.50
Full Baths	2
Half Baths	1
Square Footage	1,604
Acres	0.00
Year Built	2025
Type	Single Family
Sub-Type	Detached Single Family
Style	2 Storey
Status	Active



## Community Information

Address	134 Garneau Gate
Area	Spruce Grove
Subdivision	Greenbury
City	Spruce Grove
County	ALBERTA
Province	AB
Postal Code	T7X 0M6

## Amenities

Amenities	Detectors Smoke, No Animal Home, No Smoking Home
Parking	Front/Rear Drive Access

## Interior

Interior Features	ensuite bathroom
Appliances	See Remarks
Heating	Forced Air-1, Natural Gas
Stories	2
Has Basement	Yes
Basement	Full, Unfinished

## Exterior

Exterior	Wood, Vinyl
Exterior Features	Playground Nearby, Public Transportation, Schools, Shopping Nearby
Roof	Asphalt Shingles
Construction	Wood, Vinyl
Foundation	Concrete Perimeter

## Additional Information

Date Listed	March 27th, 2025
Days on Market	34
Zoning	Zone 91

DATA IS DEEMED RELIABLE BUT IS NOT GUARANTEED ACCURATE BY THE REALTORS® ASSOCIATION OF EDMONTON. COPYRIGHT 2025 BY THE REALTORS® ASSOCIATION OF EDMONTON. ALL RIGHTS RESERVED. Trademarks are owned or controlled by the Canadian Real Estate Association (CREA) and identify real estate professionals who are members of CREA (REALTOR®, REALTORS®) and/or the quality of services they provide (MLS®, Multiple Listing Service®)

Listing information last updated on April 29th, 2025 at 9:47pm MDT