

## \$659,000 - 31 1225 Wanyandi Road, Edmonton

MLS® #E4429487

**\$659,000**

2 Bedroom, 2.50 Bathroom, 1,917 sqft  
Condo / Townhouse on 0.00 Acres

Oleskiw, Edmonton, AB

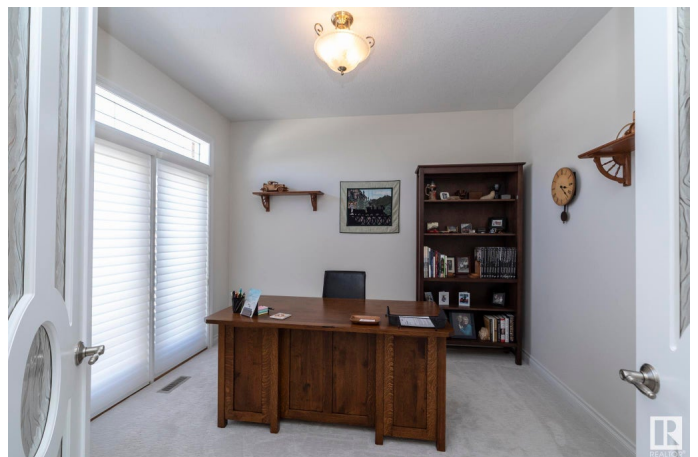
### COUNTRY CLUB AT EAGLE POINTE.

Desirable gated community in Edmonton. This 2 bedroom 2.5 bath , over 1,900 sq ft bungalow has been lovingly maintained. The spacious living room and formal dining area with 12' ceiling is a wonderful space for enjoying friends and family. A spacious and sunny private office, main floor laundry, mudroom, bathroom are on this level and access to the double garage with floor drain . The kitchen and dinette area offers the perfect spot to. enjoy the cozy fireplace, the views to the west deck or for more relaxed visits. This open concept space offers a large kitchen with walk in pantry, plenty of counter space and storage and a generous size dinette for casual meals and has access to the west facing deck. The lower level is fully finished and features a huge recreation room, large bedroom and a 3 piece ensuite, a second den, huge space that makes for perfect sewing room and a large storage area.

Built in 2006

### Essential Information

|           |           |
|-----------|-----------|
| MLS® #    | E4429487  |
| Price     | \$659,000 |
| Bedrooms  | 2         |
| Bathrooms | 2.50      |



|                |                   |
|----------------|-------------------|
| Full Baths     | 2                 |
| Half Baths     | 1                 |
| Square Footage | 1,917             |
| Acres          | 0.00              |
| Year Built     | 2006              |
| Type           | Condo / Townhouse |
| Sub-Type       | Half Duplex       |
| Style          | Bungalow          |
| Status         | Active            |

### Community Information

|             |                       |
|-------------|-----------------------|
| Address     | 31 1225 Wanyandi Road |
| Area        | Edmonton              |
| Subdivision | Oleskiw               |
| City        | Edmonton              |
| County      | ALBERTA               |
| Province    | AB                    |
| Postal Code | T6M 2W7               |

### Amenities

|           |   |
|-----------|---|
| Amenities | Air Conditioner, Closet Organizers, Detectors Smoke, No Smoking Home, Parking-Visitor, Natural Gas BBQ Hookup |
| Parking   | Double Garage Attached  |

### Interior

|                   |   |
|-------------------|---|
| Interior Features | ensuite bathroom  |
| Appliances        | Air Conditioning-Central, Dishwasher-Built-In, Dryer, Garage Opener, Oven-Microwave, Refrigerator, Stove-Countertop Electric, Vacuum System Attachments, Washer, Window Coverings |
| Heating           | Forced Air-1, Natural Gas   |
| Fireplace         | Yes   |
| Fireplaces        | Corner  |
| Stories           | 2   |
| Has Basement      | Yes   |
| Basement          | Full, Finished  |

### Exterior

|                   |  |
|-------------------|--|
| Exterior          | Wood, Brick, Stucco  |
| Exterior Features | Backs Onto Park/Trees, Fenced, Gated Community, Golf Nearby, |

|              |  |
|--------------|--|
|              | Landscaped, Public Transportation, Shopping Nearby |
| Roof         | Asphalt Shingles                                   |
| Construction | Wood, Brick, Stucco                                |
| Foundation   | Concrete Perimeter                                 |

### **Additional Information**

|                |                 |
|----------------|-----------------|
| Date Listed    | April 7th, 2025 |
| Days on Market | 23              |
| Zoning         | Zone 22         |
| Condo Fee      | \$702           |

DATA IS DEEMED RELIABLE BUT IS NOT GUARANTEED ACCURATE BY THE REALTORS® ASSOCIATION OF EDMONTON. COPYRIGHT 2025 BY THE REALTORS® ASSOCIATION OF EDMONTON. ALL RIGHTS RESERVED. Trademarks are owned or controlled by the Canadian Real Estate Association (CREA) and identify real estate professionals who are members of CREA (REALTOR®, REALTORS®) and/or the quality of services they provide (MLS®, Multiple Listing Service®)

Listing information last updated on April 30th, 2025 at 2:47pm MDT