

## \$595,000 - 9332 89 Street, Edmonton

MLS® #E4429535

**\$595,000**

3 Bedroom, 2.50 Bathroom, 1,656 sqft  
Single Family on 0.00 Acres

Strathearn, Edmonton, AB

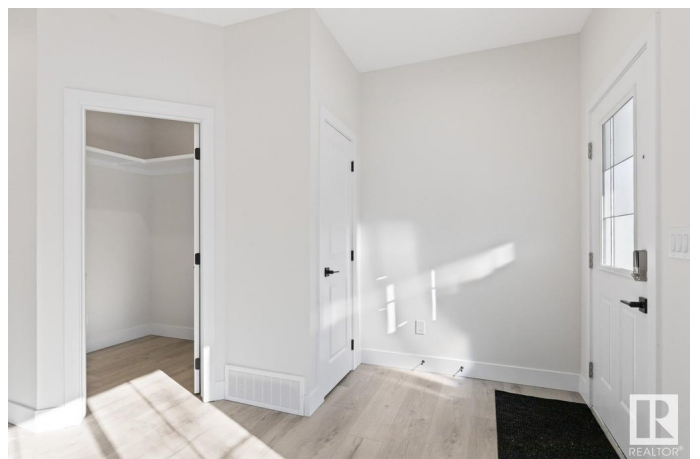
Fantastic Opportunity in Strathearn! Perfect for Investors or First-Time Buyers! Looking for the perfect blend of style, functionality, and potential? This modern 1/2 duplex in the mature centrally located neighbourhood of Strathearn offers it all! Whether you're a savvy investor looking for a mortgage helper or a family searching for extra space, this home is tailored for today's needs. With its stunning curb appeal, the main floor boasts a gourmet kitchen complete with built-in bar area & spacious dining/living space perfect for entertaining. A 2pc bath completes this level. Upstairs you'll find 3 spacious bedrooms including a king size primary with 3pc ensuite. A 4pc bath & convenient laundry room completes this level. The basement with separate side entrance is ready to develop. This home is beautifully finished with modern touches. C/W New Home Warranty & real property report with compliance. You can move in or invest with peace of mind. Don't miss out on this incredible opportunity in Strathearn.

Built in 2023

### Essential Information

MLS® # E4429535

Price \$595,000



|                |               |
|----------------|---------------|
| Bedrooms       | 3             |
| Bathrooms      | 2.50          |
| Full Baths     | 2             |
| Half Baths     | 1             |
| Square Footage | 1,656         |
| Acres          | 0.00          |
| Year Built     | 2023          |
| Type           | Single Family |
| Sub-Type       | Half Duplex   |
| Style          | 2 Storey      |
| Status         | Active        |

### **Community Information**

|             |                |
|-------------|----------------|
| Address     | 9332 89 Street |
| Area        | Edmonton       |
| Subdivision | Strathearn     |
| City        | Edmonton       |
| County      | ALBERTA        |
| Province    | AB             |
| Postal Code | T6C 3L2        |

### **Amenities**

|           |                        |
|-----------|------------------------|
| Amenities | See Remarks            |
| Parking   | Double Garage Detached |

### **Interior**

|                   |                                 |
|-------------------|---------------------------------|
| Interior Features | ensuite bathroom                |
| Appliances        | Microwave Hood Fan, See Remarks |
| Heating           | Forced Air-1, Natural Gas       |
| Stories           | 2                               |
| Has Basement      | Yes                             |
| Basement          | Full, Unfinished                |

### **Exterior**

|                   |                    |
|-------------------|--------------------|
| Exterior          | Wood, Vinyl        |
| Exterior Features | See Remarks        |
| Roof              | Asphalt Shingles   |
| Construction      | Wood, Vinyl        |
| Foundation        | Concrete Perimeter |

## Additional Information

Date Listed April 7th, 2025

Days on Market 23

Zoning Zone 18

DATA IS DEEMED RELIABLE BUT IS NOT GUARANTEED ACCURATE BY THE REALTORS® ASSOCIATION OF EDMONTON. COPYRIGHT 2025 BY THE REALTORS® ASSOCIATION OF EDMONTON. ALL RIGHTS RESERVED. Trademarks are owned or controlled by the Canadian Real Estate Association (CREA) and identify real estate professionals who are members of CREA (REALTOR®, REALTORS®) and/or the quality of services they provide (MLS®, Multiple Listing Service®)

Listing information last updated on April 30th, 2025 at 6:47pm MDT