

# **\$1,900,000 - 4410 Wingfield Cape, Edmonton**

MLS® #E4430216

**\$1,900,000**

6 Bedroom, 6.00 Bathroom, 3,732 sqft

Single Family on 0.00 Acres

Windermere, Edmonton, AB

Nestled in exclusive West Pointe, Windermere, backing onto a pond & greenspace this exquisite estate defines refined luxury! Designed to impress with great curb appeal. Step inside to the 2-storey living space that offers a wall of windows that provide lots of natural light & incredible views of the pond & greenspace. Step out onto the huge deck overlooking the pond; a great space to entertain or a tranquil place to unwind! The sleek Italian-inspired kitchen has a huge island, plenty of pull-outs, a built-in coffee bar & a separate spice kitchen. The dining area with linear fireplace is a generous size for entertaining. Every inch of your 5,400 sq. ft. residence exudes elegance, with seamless natural grey marble flooring on all 3 levels & in-floor heating. The home boasts 6 spacious bedrooms, 6 luxurious bathrooms, a bonus room, a home theatre room & a dedicated gym. The walkout basement offers added living space while maintaining the home's sophisticated style. Modern living with timeless elegance!

Built in 2021

## **Essential Information**

MLS® #	E4430216
Price	\$1,900,000



Bedrooms	6
Bathrooms	6.00
Full Baths	6
Square Footage	3,732
Acres	0.00
Year Built	2021
Type	Single Family
Sub-Type	Detached Single Family
Style	2 Storey
Status	Active

### Community Information

Address	4410 Wingfield Cape
Area	Edmonton
Subdivision	Windermere
City	Edmonton
County	ALBERTA
Province	AB
Postal Code	T6W 2E1

### Amenities

Amenities	Air Conditioner, Ceiling 10 ft., Closet Organizers, Patio, Vaulted Ceiling, Vinyl Windows, Walkout Basement
Parking	Triple Garage Attached

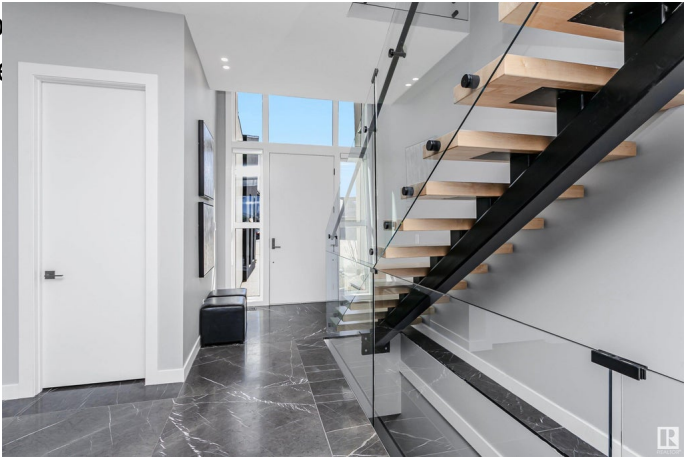
### Interior

Interior Features	ensuite bathroom
Appliances	Air Conditioning-Central, Dryer, Garage Control, Garage Opener, Hood Fan, Stove-Countertop Electric, Stove-Gas, Washer, Refrigerators-Two, Dishwasher-Two, Curtains and Blinds
Heating	Forced Air-2, Natural Gas
Fireplace	Yes
Fireplaces	See Remarks
Stories	2
Has Basement	Yes
Basement	Full, Finished

### Exterior

Exterior	Wood, Stucco
----------	--------------

Exterior Features    Airport Nearby, Backs Onto  
Park/Reserve, Playground Ne  
Roof                    EPDM Membrane  
Construction        Wood, Stucco  
Foundation          Concrete Perimeter



**School Information**

Elementary            Constable Daniel Woodall  
Middle                St John XXIII

**Additional Information**

Date Listed            April 10th, 2025  
Days on Market       20  
Zoning                 Zone 56  
HOA Fees              525  
HOA Fees Freq.      Annually

DATA IS DEEMED RELIABLE BUT IS NOT GUARANTEED ACCURATE BY THE REALTORS® ASSOCIATION OF EDMONTON. COPYRIGHT 2025 BY THE REALTORS® ASSOCIATION OF EDMONTON. ALL RIGHTS RESERVED.Trademarks are owned or controlled by the Canadian Real Estate Association (CREA) and identify real estate professionals who are members of CREA (REALTOR®, REALTORS®) and/or the quality of services they provide (MLS®, Multiple Listing Service®)  
Listing information last updated on April 30th, 2025 at 5:47am MDT