

\$384,900 - 11025 153a Street, Edmonton

MLS® #E4431199

\$384,900

4 Bedroom, 2.00 Bathroom, 1,058 sqft

Single Family on 0.00 Acres

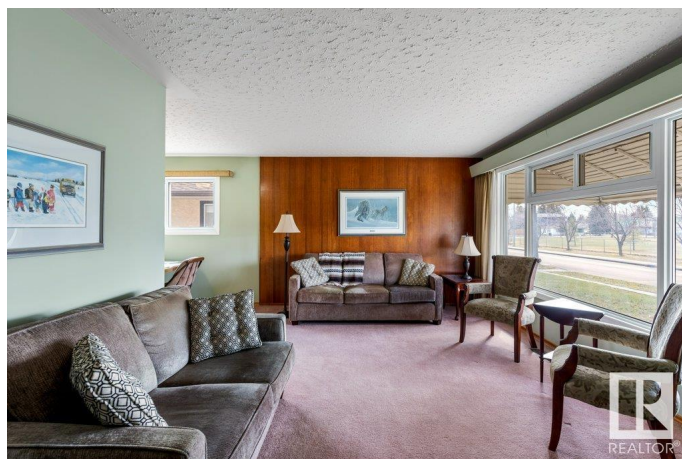
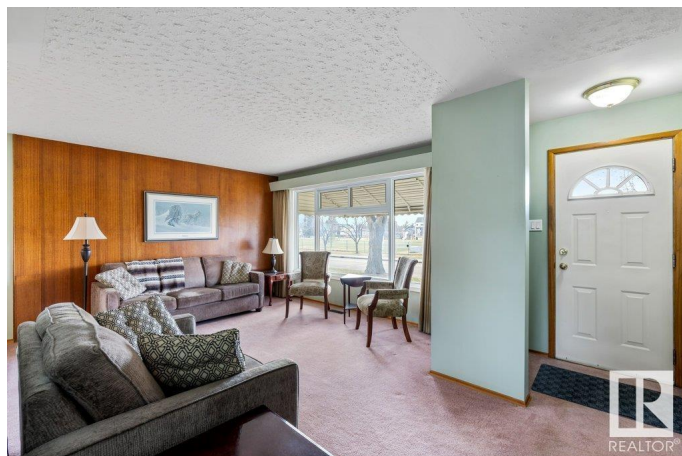
High Park (Edmonton), Edmonton, AB

Welcome to this turn-key bungalow in the quiet, convenient High Park neighbourhood. Nestled on a tree-lined street across from a park, this 4-bedroom, 2-bath home has plenty of cozy charm. The main floor is flooded with natural light—perfect for everyday living or entertaining. The kitchen boasts full-height cabinetry, a tiled backsplash, ample counter space and dinette. Three spacious bedrooms and 4-piece bath complete the main level. Downstairs, the fully finished basement offers one more bedroom, a large family room, a 3-piece bath, and laundry area with storage. Enjoy the backyard with concrete patio, space for a vegetable garden and double detached garage. This home awaits your personal touch!

Built in 1959

Essential Information

| | |
|----------------|---------------|
| MLS® # | E4431199 |
| Price | \$384,900 |
| Bedrooms | 4 |
| Bathrooms | 2.00 |
| Full Baths | 2 |
| Square Footage | 1,058 |
| Acres | 0.00 |
| Year Built | 1959 |
| Type | Single Family |



| | |
|----------|------------------------|
| Sub-Type | Detached Single Family |
| Style | Bungalow |
| Status | Active |

Community Information

| | |
|-------------|----------------------|
| Address | 11025 153a Street |
| Area | Edmonton |
| Subdivision | High Park (Edmonton) |
| City | Edmonton |
| County | ALBERTA |
| Province | AB |
| Postal Code | T5P 2E7 |

Amenities

| | |
|-----------|------------------------|
| Amenities | See Remarks |
| Parking | Double Garage Detached |

Interior

| | |
|--------------|--|
| Appliances | Dishwasher-Built-In, Dryer, Garage Control, Garage Opener, Oven-Microwave, Stove-Electric, Washer, Refrigerators-Two |
| Heating | Forced Air-1, Natural Gas |
| Stories | 2 |
| Has Basement | Yes |
| Basement | Full, Finished |

Exterior

| | |
|-------------------|---|
| Exterior | Wood, Stucco, Vinyl |
| Exterior Features | Back Lane, Fenced, Flat Site, Landscaped, Playground Nearby, Public Transportation, Schools, Shopping Nearby, See Remarks |
| Roof | Asphalt Shingles |
| Construction | Wood, Stucco, Vinyl |
| Foundation | Concrete Perimeter |

Additional Information

| | |
|----------------|------------------|
| Date Listed | April 16th, 2025 |
| Days on Market | 14 |
| Zoning | Zone 21 |

DATA IS DEEMED RELIABLE BUT IS NOT GUARANTEED ACCURATE BY THE REALTORS® ASSOCIATION OF EDMONTON. COPYRIGHT 2025 BY THE REALTORS® ASSOCIATION OF EDMONTON. ALL RIGHTS RESERVED. Trademarks are owned or controlled by the Canadian Real Estate Association (CREA) and identify real

estate professionals who are members of CREA (REALTOR®®, REALTORS®®) and/or the quality of services they provide (MLS®®, Multiple Listing Service®®)

Listing information last updated on April 30th, 2025 at 9:02am MDT