

\$460,000 - 26 Kenton Way, Spruce Grove

MLS® #E4436606

\$460,000

3 Bedroom, 2.50 Bathroom, 1,528 sqft

Single Family on 0.00 Acres

Kenton, Spruce Grove, AB

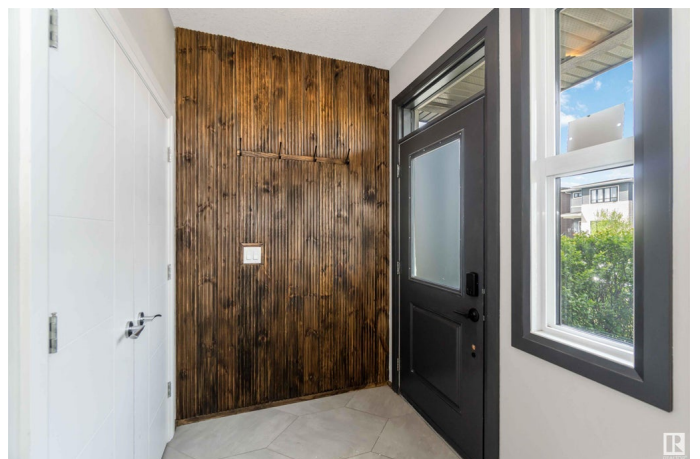
Discover your next home in the sought-after community of Kenton! This beautifully updated 2-storey is ideally located just 20 minutes from West Edmonton Mall, with quick access to Hwy 16. Enjoy nearby Jubilee Park, the new Kâ€9 Prescott Learning Centre, and the proposed Civic Centreâ€”bringing future entertainment and value. You're also steps from the new arena at Heavy Metal Place. Inside, the stylish open-concept layout showcases hand-scraped hardwood, porcelain tile, and renovated bathrooms. Among the luxury upgrades: granite counters, plaster feature walls, custom built-ins, open pantry with custom shelving, and a cozy breakfast nook with built-in banquette. The main floor is rich with thoughtful design, warmth, and function. Upstairs, find three spacious bedrooms, including a generous primary suite with 3-piece ensuite. The beautifully landscaped yard features low-maintenance perennials, stamped concrete patio, and walkway. An oversized garage fits your lifted truck with ease.

Built in 2014

Essential Information

MLS® # E4436606

Price \$460,000



Bedrooms	3
Bathrooms	2.50
Full Baths	2
Half Baths	1
Square Footage	1,528
Acres	0.00
Year Built	2014
Type	Single Family
Sub-Type	Detached Single Family
Style	2 Storey
Status	Active

Community Information

Address	26 Kenton Way
Area	Spruce Grove
Subdivision	Kenton
City	Spruce Grove
County	ALBERTA
Province	AB
Postal Code	T7X 0P7

Amenities

Amenities	See Remarks
Parking	Double Garage Detached, Over Sized

Interior

Interior Features	ensuite bathroom
Appliances	Dishwasher-Built-In, Dryer, Microwave Hood Fan, Refrigerator, Stove-Electric, Window Coverings, Washers-Two
Heating	Forced Air-1, Natural Gas
Fireplace	Yes
Fireplaces	Tile Surround
Stories	2
Has Basement	Yes
Basement	Full, Partially Finished

Exterior

Exterior	Wood, Vinyl
Exterior Features	See Remarks

Roof	Asphalt Shingles
Construction	Wood, Vinyl
Foundation	Concrete Perimeter

Additional Information

Date Listed	May 14th, 2025
Days on Market	80
Zoning	Zone 91

DATA IS DEEMED RELIABLE BUT IS NOT GUARANTEED ACCURATE BY THE REALTORS® ASSOCIATION OF EDMONTON. COPYRIGHT 2025 BY THE REALTORS® ASSOCIATION OF EDMONTON. ALL RIGHTS RESERVED.Trademarks are owned or controlled by the Canadian Real Estate Association (CREA) and identify real estate professionals who are members of CREA (REALTOR®, REALTORS®) and/or the quality of services they provide (MLS®, Multiple Listing Service®)

Listing information last updated on August 2nd, 2025 at 7:32am MDT