

\$549,900 - 4 Chambery Crescent, St. Albert

MLS® #E4437460

\$549,900

3 Bedroom, 2.50 Bathroom, 1,716 sqft

Single Family on 0.00 Acres

Cherot, St. Albert, AB

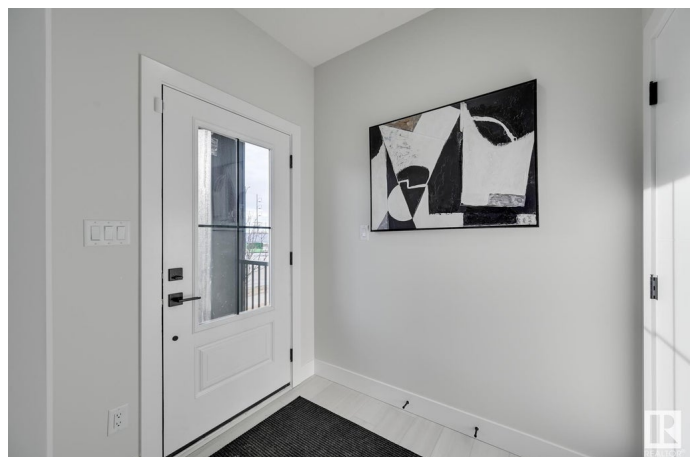
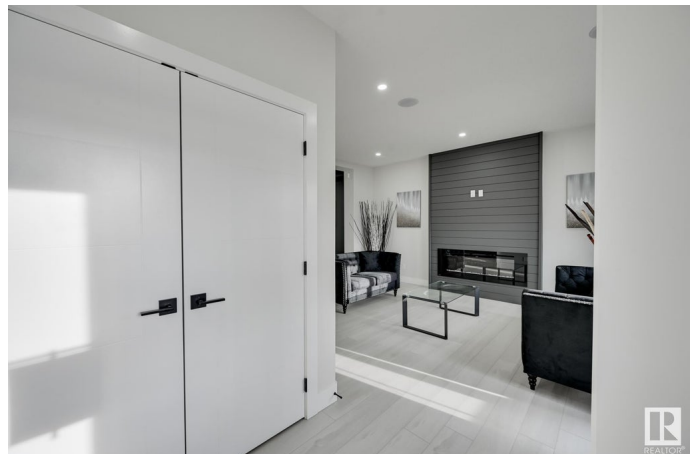
SHOW HOME FOR SALE!!! Welcome to this brand new show home 1716 SQFT Birmingham model by award winning builder Blackstone Homes in Cherot in St. Albert. This home has been nominated as best home in BILD awards 2024. The exceptional architectural & magnificent PARIS Playground makes this neighbourhood unique. Upon entry, you will be welcomed by spacious foyer with huge great room offering linear fireplace with feature wall, dining room with coffered ceiling & bar, perfect for entertaining, beautiful 2 tone kitchen offering up to the ceiling soft closing cabinets. The 2nd floor offers 3 large bedrooms, 2 baths, bonus room & laundry. Master bedroom is huge with beautiful en-suite & good size closet. Back entry offering mudroom with built ins. Other upgrades - Separate entrance, deck, black exterior windows, 9' main/basement ceiling, MDF shelving, black electrical/plumbing fixtures, feature walls, upgraded quartz throughout, appliances & New Home Warranty. Great location-close to Ray Gibbons Dr/park/amenities.

Built in 2023

Essential Information

MLS® # E4437460

Price \$549,900



Bedrooms	3
Bathrooms	2.50
Full Baths	2
Half Baths	1
Square Footage	1,716
Acres	0.00
Year Built	2023
Type	Single Family
Sub-Type	Detached Single Family
Style	2 Storey
Status	Active

Community Information

Address	4 Chambery Crescent
Area	St. Albert
Subdivision	ChÃ©rot
City	St. Albert
County	ALBERTA
Province	AB
Postal Code	T8T 2C1

Amenities

Amenities	Off Street Parking, Bar, Ceiling 9 ft., Closet Organizers, Deck, Hot Water Natural Gas
Parking	Parking Pad Cement/Paved

Interior

Interior Features	ensuite bathroom
Appliances	Dishwasher-Built-In, Hood Fan, Refrigerator, Stacked Washer/Dryer, Stove-Electric, Window Coverings
Heating	Forced Air-1, Natural Gas
Fireplace	Yes
Fireplaces	Insert
Stories	2
Has Basement	Yes
Basement	Full, Unfinished

Exterior

Exterior	Wood, Vinyl
----------	-------------

Exterior Features	Back Lane, Landscaped, Playground Nearby, Shopping Nearby
Roof	Asphalt Shingles
Construction	Wood, Vinyl
Foundation	Concrete Perimeter

Additional Information

Date Listed	May 20th, 2025
Days on Market	27
Zoning	Zone 24
HOA Fees Freq.	Annually

DATA IS DEEMED RELIABLE BUT IS NOT GUARANTEED ACCURATE BY THE REALTORS® ASSOCIATION OF EDMONTON. COPYRIGHT 2025 BY THE REALTORS® ASSOCIATION OF EDMONTON. ALL RIGHTS RESERVED.Trademarks are owned or controlled by the Canadian Real Estate Association (CREA) and identify real estate professionals who are members of CREA (REALTOR®, REALTORS®) and/or the quality of services they provide (MLS®, Multiple Listing Service®)

Listing information last updated on June 16th, 2025 at 6:02am MDT