

## \$419,900 - 6855 Cardinal Link, Edmonton

MLS® #E4437793

**\$419,900**

4 Bedroom, 3.50 Bathroom, 1,356 sqft

Single Family on 0.00 Acres

Chappelle Area, Edmonton, AB

PRIME LOCATION in Chappelle! Welcome to this beautifully maintained 4 bed, 3.5 bath high-efficiency home offering over 1,800 sq.ft of total living space on a quiet road with no rear neighbors! The bright and functional main floor features a cozy living room, kitchen with island & pantry, and a dining area that opens to your private deck and fully fenced backyardâ€”perfect for kids, pets & entertaining. Upstairs boasts a massive primary suite (nearly 18 ft!) with walk-in closet & ensuite, plus two spacious bedrooms, full bath & convenient 2nd floor laundry. The fully finished basement includes a large rec room or 4th bedroom with door for privacy, and a full bathâ€”ideal for guests or teens. Upgrades include brand new tankless water heater, high-efficiency furnace control board, HRV system, water softener, triple pane windows, newer appliances & carpet. Steps to schools, shopping, parks, transit, and minutes to the airport. Incredible value in a family-friendly communityâ€”this gem wonâ€™t last!

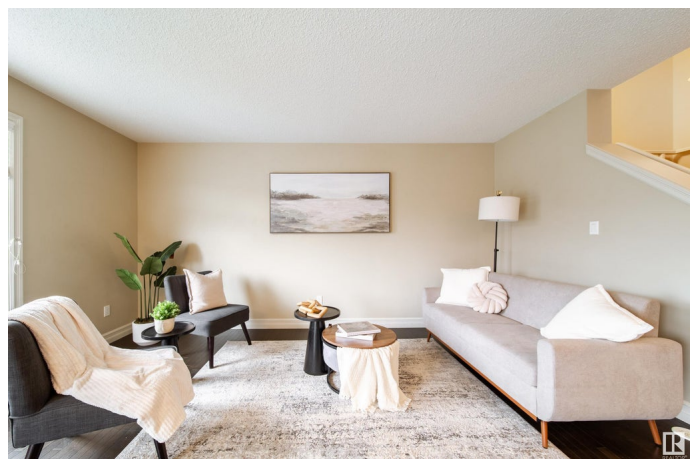
Built in 2013

### Essential Information

MLS® # E4437793

Price \$419,900

Bedrooms 4



Bathrooms	3.50
Full Baths	3
Half Baths	1
Square Footage	1,356
Acres	0.00
Year Built	2013
Type	Single Family
Sub-Type	Half Duplex
Style	2 Storey
Status	Active

### Community Information

Address	6855 Cardinal Link
Area	Edmonton
Subdivision	Chappelle Area
City	Edmonton
County	ALBERTA
Province	AB
Postal Code	T6W 1Z1

### Amenities

Amenities	Deck, Front Porch, Hot Water Tankless, Vinyl Windows, HRV System
Parking Spaces	2
Parking	Single Garage Attached

### Interior

Interior Features	ensuite bathroom
Appliances	Dishwasher-Built-In, Fan-Ceiling, Garage Control, Garage Opener, Microwave Hood Fan, Refrigerator, Stacked Washer/Dryer, Stove-Electric, Water Softener, Window Coverings
Heating	Forced Air-1, Natural Gas
Stories	3
Has Basement	Yes
Basement	Full, Finished

### Exterior

Exterior	Wood, Vinyl
Exterior Features	Airport Nearby, Fenced, Landscaped, Playground Nearby, Public Transportation, Schools, Shopping Nearby

Roof	Asphalt Shingles
Construction	Wood, Vinyl
Foundation	Concrete Perimeter

**School Information**

Elementary	Donald R. Getty School
Middle	Donald R. Getty School
High	Dr. Anne Anderson School

**Additional Information**

Date Listed	May 22nd, 2025
Days on Market	9
Zoning	Zone 55
HOA Fees	100
HOA Fees Freq.	Annually

DATA IS DEEMED RELIABLE BUT IS NOT GUARANTEED ACCURATE BY THE REALTORS® ASSOCIATION OF EDMONTON. COPYRIGHT 2025 BY THE REALTORS® ASSOCIATION OF EDMONTON. ALL RIGHTS RESERVED.Trademarks are owned or controlled by the Canadian Real Estate Association (CREA) and identify real estate professionals who are members of CREA (REALTOR®, REALTORS®) and/or the quality of services they provide (MLS®, Multiple Listing Service®)

Listing information last updated on May 31st, 2025 at 7:02am MDT