

\$434,900 - 2141 78 Street, Edmonton

MLS® #E4438450

\$434,900

4 Bedroom, 2.50 Bathroom, 1,238 sqft
Single Family on 0.00 Acres

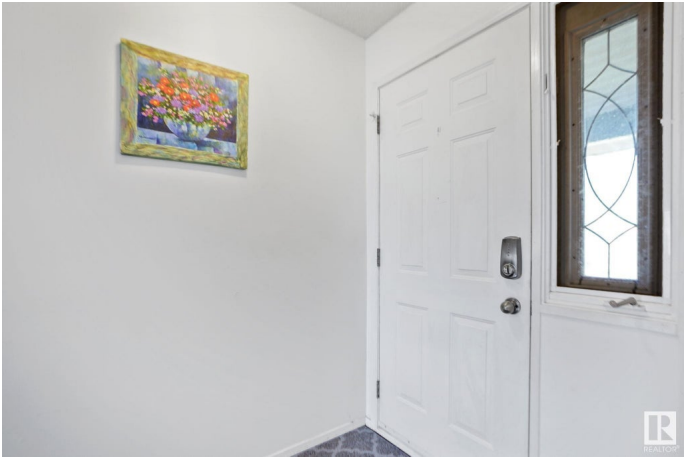
Satoo, Edmonton, AB

Tucked away in a peaceful cul-de-sac in the family-friendly community of Satoo, this fully finished 4-level split home offers space, functionality, and flexibility for growing families. This well-maintained property features 4 bedrooms, 2.5 bathrooms, and a thoughtfully designed layout. The main floor welcomes you with a spacious living room, a separate dining area, and a bright, well-organized kitchen—perfect for everyday living and entertaining. Upstairs, you’ll find the primary suite with its own private half-bath, along with two additional bedrooms and a full bathroom. On the third level, enjoy a versatile flex room, a fourth bedroom, and another full bath—ideal for guests or a home office. The fourth level is a blank canvas—perfect as a rec room, home gym, or extra storage space. Step outside to the fully fenced south-facing backyard, backing onto a utility right-of-way for added privacy—ideal for summer BBQs or family gatherings. A 24’ x 26’ insulated double detached garage provides ample room.

Built in 1975

Essential Information

MLS® #	E4438450
Price	\$434,900



Bedrooms	4
Bathrooms	2.50
Full Baths	2
Half Baths	1
Square Footage	1,238
Acres	0.00
Year Built	1975
Type	Single Family
Sub-Type	Detached Single Family
Style	4 Level Split
Status	Active

Community Information

Address	2141 78 Street
Area	Edmonton
Subdivision	Satoo
City	Edmonton
County	ALBERTA
Province	AB
Postal Code	T6K 2E4

Amenities

Amenities	Deck
Parking Spaces	5
Parking	Double Garage Detached

Interior

Interior Features	ensuite bathroom
Appliances	Air Conditioning-Central, Dishwasher-Built-In, Dryer, Hood Fan, Oven-Microwave, Refrigerator, Stove-Electric, Washer
Heating	Forced Air-1, Natural Gas
Fireplace	Yes
Fireplaces	Brick Facing
Stories	4
Has Basement	Yes
Basement	Full, Finished

Exterior

Exterior	Wood, Brick, Vinyl
----------	--------------------

Exterior Features	Cul-De-Sac, Fenced, Public Transportation, Schools, Shopping Nearby
Roof	Asphalt Shingles
Construction	Wood, Brick, Vinyl
Foundation	Concrete Perimeter

Additional Information

Date Listed	May 25th, 2025
Days on Market	23
Zoning	Zone 29

DATA IS DEEMED RELIABLE BUT IS NOT GUARANTEED ACCURATE BY THE REALTORS® ASSOCIATION OF EDMONTON. COPYRIGHT 2025 BY THE REALTORS® ASSOCIATION OF EDMONTON. ALL RIGHTS RESERVED.Trademarks are owned or controlled by the Canadian Real Estate Association (CREA) and identify real estate professionals who are members of CREA (REALTOR®, REALTORS®) and/or the quality of services they provide (MLS®, Multiple Listing Service®)

Listing information last updated on June 17th, 2025 at 12:32am MDT