

\$340,000 - 2021 Grantham Court, Edmonton

MLS® #E4439031

\$340,000

3 Bedroom, 2.50 Bathroom, 1,276 sqft
Condo / Townhouse on 0.00 Acres

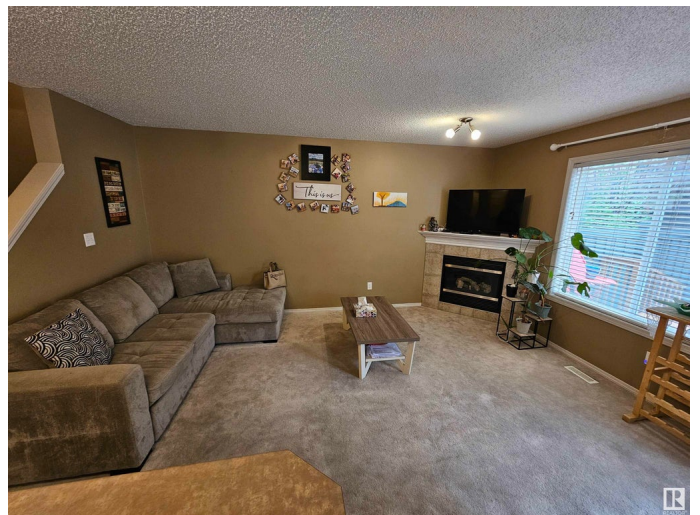
Glastonbury, Edmonton, AB

This 3 bedroom, 2.5 bath duplex townhome has many nice features, which include: a nice open floorplan with a large living room with gas fireplace, and a beautiful kitchen with plenty of storage, counter space, plus a centre island. The patio doors lead to a big deck overlooking the fully fenced yard which is great for kids and pets. A large front closet and convenient 2 pc main finish off the main floor. The upper floor offers a full 4 piece bathroom and 3 large bedrooms, with a large, bright walk-in closet in the Primary Bedroom. The fully finished basement has a large family room, wired for surround theatre sound and kids play room. There is a large storage room with shelving and another 4 Piece bath. The washer & dryer were replaced 3 months ago and the dishwasher is a year old. The attached garage is so nice for grocery packing and offers a good winter protection for your car. There is central air conditioning. Close to schools, playground, shopping and bus stop.

Built in 2004

Essential Information

MLS® #	E4439031
Price	\$340,000
Bedrooms	3
Bathrooms	2.50



Full Baths	2
Half Baths	1
Square Footage	1,276
Acres	0.00
Year Built	2004
Type	Condo / Townhouse
Sub-Type	Half Duplex
Style	2 Storey
Status	Active

Community Information

Address	2021 Grantham Court
Area	Edmonton
Subdivision	Glastonbury
City	Edmonton
County	ALBERTA
Province	AB
Postal Code	T5T 6V7

Amenities

Amenities	Air Conditioner, Deck, Detectors Smoke, Hot Water Natural Gas, No Smoking Home, Vinyl Windows
Parking	Insulated, Single Garage Attached

Interior

Appliances	Dishwasher-Built-In, Dryer, Garage Control, Garage Opener, Hood Fan, Refrigerator, Storage Shed, Stove-Electric, Vacuum System Attachments, Vacuum Systems, Washer, Window Coverings
Heating	Forced Air-1, Natural Gas
Fireplace	Yes
Fireplaces	Corner
Stories	3
Has Basement	Yes
Basement	Full, Finished

Exterior

Exterior	Wood, Stone, Vinyl
Exterior Features	Fenced, Flat Site, Landscaped, Playground Nearby, Public Transportation, Schools, Shopping Nearby

Roof	Asphalt Shingles
Construction	Wood, Stone, Vinyl
Foundation	Concrete Perimeter

Additional Information

Date Listed	May 26th, 2025
Days on Market	20
Zoning	Zone 58
Condo Fee	\$259



DATA IS DEEMED RELIABLE BUT IS NOT GUARANTEED ACCURATE BY THE REALTORS® ASSOCIATION OF EDMONTON. COPYRIGHT 2025 BY THE REALTORS® ASSOCIATION OF EDMONTON. ALL RIGHTS RESERVED.Trademarks are owned or controlled by the Canadian Real Estate Association (CREA) and identify real estate professionals who are members of CREA (REALTOR®, REALTORS®) and/or the quality of services they provide (MLS®, Multiple Listing Service®)

Listing information last updated on June 15th, 2025 at 9:17pm MDT