

\$185,000 - 9363 Simpson Drive, Edmonton

MLS® #E4440092

\$185,000

2 Bedroom, 2.00 Bathroom, 1,001 sqft
Condo / Townhouse on 0.00 Acres

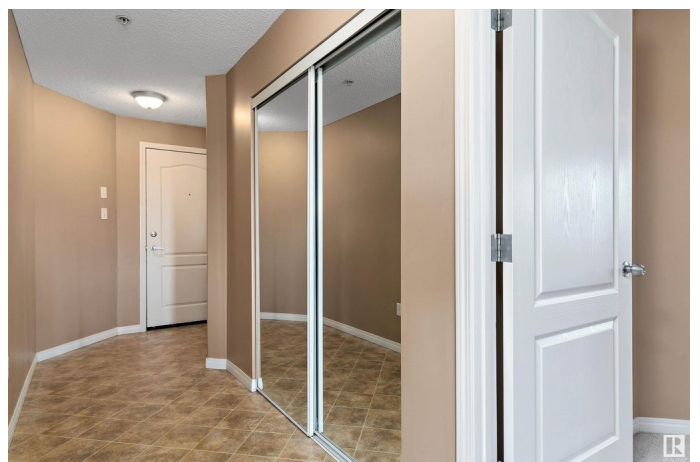
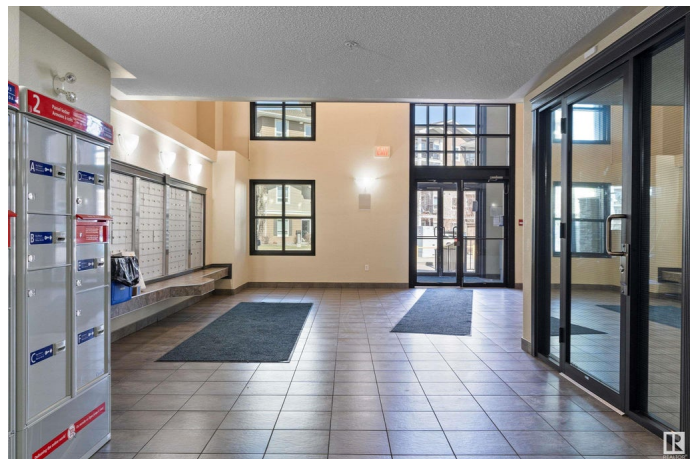
South Terwillegar, Edmonton, AB

Large 1000 sq ft CORNER SUITE! Freshly painted unit is located in popular Terwillegar, and features 2 bed and 2 bath. One of the largest suites in building that has more room to enjoy, and is surrounded by large windows bringing in tons of natural light. OPEN FLOOR PLAN with lots of counter space and cabinets in kitchen with a huge peninsula with seating for 4. Larger dining space than most units make entertaining much easier. Spacious living room has access to the PRIVATE corner balcony with south exposure. Primary suite has a walk thru closet and 4 piece bath. Another 4 piece bath and second bedroom are on the other side of the unit. Big laundry/storage room and beautiful foyer. This main floor condo is in an excellent southside location with easy access to Anthony Henday, close to amazing schools, playgrounds, Windermere Currents shopping centre and more.

Built in 2008

Essential Information

MLS® #	E4440092
Price	\$185,000
Bedrooms	2
Bathrooms	2.00
Full Baths	2



Square Footage	1,001
Acres	0.00
Year Built	2008
Type	Condo / Townhouse
Sub-Type	Lowrise Apartment
Style	Single Level Apartment
Status	Active

Community Information

Address	9363 Simpson Drive
Area	Edmonton
Subdivision	South Terwillegar
City	Edmonton
County	ALBERTA
Province	AB
Postal Code	T6R 0N2

Amenities

Amenities	No Animal Home, No Smoking Home, Parking-Extra, Parking-Visitor, Security Door, Vinyl Windows
Parking	Stall

Interior

Interior Features	ensuite bathroom
Appliances	Dishwasher-Built-In, Dryer, Hood Fan, Refrigerator, Stove-Electric, Washer, Window Coverings
Heating	In Floor Heat System, Natural Gas
# of Stories	4
Stories	1
Has Basement	Yes
Basement	None, No Basement

Exterior

Exterior	Wood, Stone, Vinyl
Exterior Features	Airport Nearby, Fenced, Flat Site, Landscaped, Playground Nearby, Public Swimming Pool, Public Transportation, Schools, Shopping Nearby
Roof	Asphalt Shingles
Construction	Wood, Stone, Vinyl

Foundation Concrete Perimeter

School Information

Elementary ester starkman

Middle ester starkman

High lillian osbourne

Additional Information

Date Listed June 3rd, 2025

Days on Market 12

Zoning Zone 14

Condo Fee \$684

DATA IS DEEMED RELIABLE BUT IS NOT GUARANTEED ACCURATE BY THE REALTORS® ASSOCIATION OF EDMONTON. COPYRIGHT 2025 BY THE REALTORS® ASSOCIATION OF EDMONTON. ALL RIGHTS RESERVED. Trademarks are owned or controlled by the Canadian Real Estate Association (CREA) and identify real estate professionals who are members of CREA (REALTOR®, REALTORS®) and/or the quality of services they provide (MLS®, Multiple Listing Service®)

Listing information last updated on June 15th, 2025 at 7:17pm MDT