

## \$579,900 - 3912 115a Street, Edmonton

MLS® #E4440789

**\$579,900**

4 Bedroom, 2.00 Bathroom, 1,009 sqft

Single Family on 0.00 Acres

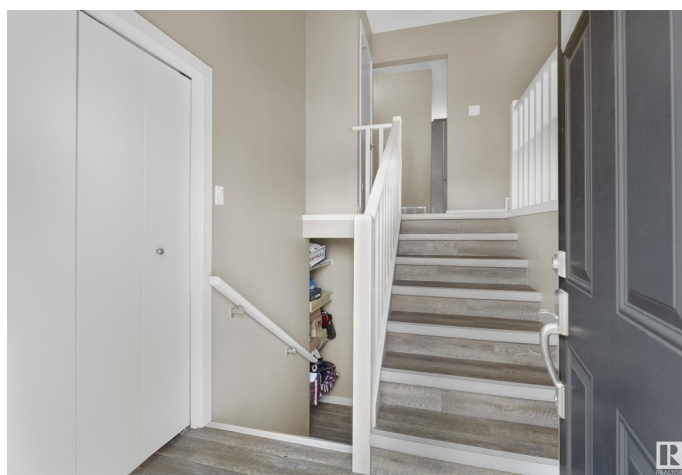
Greenfield, Edmonton, AB

Greenfield â€“ A strong family community with 3 schools, parks & is represented by the Greenfield Community League, established in 1967, with a community hall, outdoor rink & tennis courts! This 1967 bi-level has been renovated (new shingles-windows-garage & more!) & a 2-bedrom legal suite has been added to the basement totaling 2017sqft of finished living space - 4 bedrooms & 2 full bathrooms. The main floor has 1008sqft â€“ 2 bedrooms, renovated 4-piece bath, updated kitchen, new flooring, new windows â€“ bright & open. The 2-bedroom legal basement suite has 939sqft â€“ 2-bedrooms, new 4-piece bath, new kitchen, new flooring, new windows, new paint â€“ also bright & open concept. Additionally, the home has new furnaces, New Hot water tanks, New Electrical, New Garage, New Landscaping â€“ everything has been done for you to move in & rent out the basement!

Built in 1967

### Essential Information

MLS® #	E4440789
Price	\$579,900
Bedrooms	4
Bathrooms	2.00
Full Baths	2



Square Footage	1,009
Acres	0.00
Year Built	1967
Type	Single Family
Sub-Type	Detached Single Family
Style	Bi-Level
Status	Active

### Community Information

Address	3912 115a Street
Area	Edmonton
Subdivision	Greenfield
City	Edmonton
County	ALBERTA
Province	AB
Postal Code	T6J 1R1

### Amenities

Amenities	Air Conditioner, Detectors Smoke
Parking Spaces	4
Parking	Double Garage Detached, Over Sized

### Interior

Appliances	Dishwasher-Built-In, Dryer, Garage Control, Garage Opener, Washer, Refrigerators-Two, Stoves-Two
Heating	Forced Air-2, Natural Gas
Stories	2
Has Suite	Yes
Has Basement	Yes
Basement	Full, Finished

### Exterior

Exterior	Wood, Vinyl
Exterior Features	Back Lane, Fenced, Landscaped, Playground Nearby, Public Transportation, Schools, Shopping Nearby
Roof	Asphalt Shingles
Construction	Wood, Vinyl
Foundation	Concrete Perimeter

### School Information

Elementary	Greenfield School
Middle	Vernon Barford School
High	Harry Ainlay School

### **Additional Information**

Date Listed	June 6th, 2025
-------------	----------------

Days on Market	10
----------------	----

Zoning	Zone 16
--------	---------

DATA IS DEEMED RELIABLE BUT IS NOT GUARANTEED ACCURATE BY THE REALTORS® ASSOCIATION OF EDMONTON. COPYRIGHT 2025 BY THE REALTORS® ASSOCIATION OF EDMONTON. ALL RIGHTS RESERVED. Trademarks are owned or controlled by the Canadian Real Estate Association (CREA) and identify real estate professionals who are members of CREA (REALTOR®, REALTORS®) and/or the quality of services they provide (MLS®, Multiple Listing Service®)

Listing information last updated on June 15th, 2025 at 11:47pm MDT