

\$425,000 - 11439 145 Avenue, Edmonton

MLS® #E4441529

\$425,000

4 Bedroom, 2.50 Bathroom, 1,173 sqft

Single Family on 0.00 Acres

Carlisle, Edmonton, AB

This beautifully upgraded 4-bedroom, 2.5-bath bungalow in the family-friendly community of Carlisle offers more than 1200 sqft of bright, spacious living. Renovated in 2024, the home features laminate flooring throughout, a cozy wood-burning fireplace, and a modern kitchen with stainless steel appliances. The fully finished basement includes a spacious bedroom, 3-piece bathroom, a second kitchen, and a den—perfect for guests. Step outside to enjoy a private backyard with a deck, ideal for summer BBQs and relaxing, plus a double detached garage for added convenience. Conveniently situated close to schools, parks, and shopping, with easy access to major routes like 137 Ave and the Anthony Henday, commuting is a breeze. With public transit and everyday amenities just minutes away, this home offers the perfect blend of comfort, versatility, and location—ideal for families or anyone seeking a move-in-ready property in a well-established neighbourhood. All this home needs is YOU!

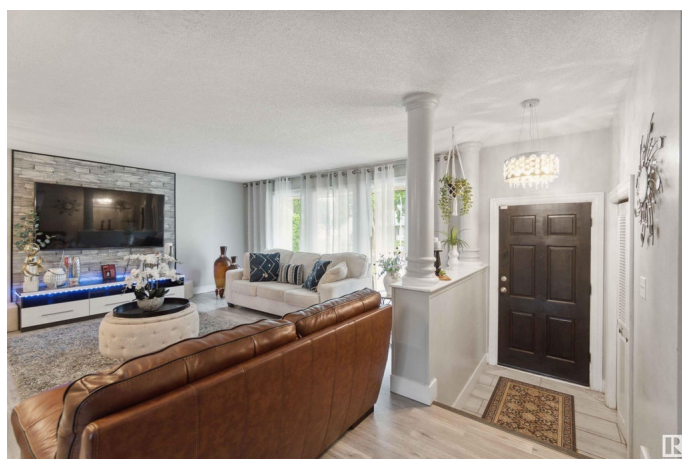
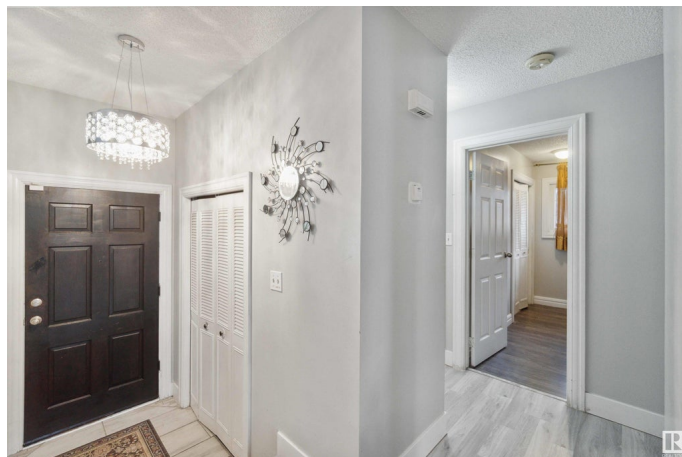
Built in 1974

Essential Information

MLS® # E4441529

Price \$425,000

Bedrooms 4



Bathrooms	2.50
Full Baths	2
Half Baths	1
Square Footage	1,173
Acres	0.00
Year Built	1974
Type	Single Family
Sub-Type	Detached Single Family
Style	Bungalow
Status	Active

Community Information

Address	11439 145 Avenue
Area	Edmonton
Subdivision	Carlisle
City	Edmonton
County	ALBERTA
Province	AB
Postal Code	T5X 1M1

Amenities

Amenities	Detectors Smoke
Parking	Double Garage Detached

Interior

Interior Features	ensuite bathroom
Appliances	Dishwasher-Built-In, Dryer, Garage Control, Garage Opener, Washer, Window Coverings, Refrigerators-Two, Stoves-Two
Heating	Forced Air-1, Natural Gas
Fireplace	Yes
Fireplaces	Brick Facing
Stories	2
Has Basement	Yes
Basement	Full, Finished

Exterior

Exterior	Wood, Stucco
Exterior Features	Back Lane, Playground Nearby, Public Transportation, Schools, Shopping Nearby

Roof	Asphalt Shingles
Construction	Wood, Stucco
Foundation	Concrete Perimeter

School Information

Elementary	Caernarvon School
Middle	Rosslyn School
High	Queen Elizabeth School

Additional Information

Date Listed	June 10th, 2025
Days on Market	6
Zoning	Zone 27

DATA IS DEEMED RELIABLE BUT IS NOT GUARANTEED ACCURATE BY THE REALTORS® ASSOCIATION OF EDMONTON. COPYRIGHT 2025 BY THE REALTORS® ASSOCIATION OF EDMONTON. ALL RIGHTS RESERVED. Trademarks are owned or controlled by the Canadian Real Estate Association (CREA) and identify real estate professionals who are members of CREA (REALTOR®, REALTORS®) and/or the quality of services they provide (MLS®, Multiple Listing Service®)

Listing information last updated on June 15th, 2025 at 11:47pm MDT