

\$319,000 - 10149 Saskatchewan Drive, Edmonton

MLS® #E4441628

\$319,000

2 Bedroom, 2.00 Bathroom, 1,028 sqft

Condo / Townhouse on 0.00 Acres

Strathcona, Edmonton, AB

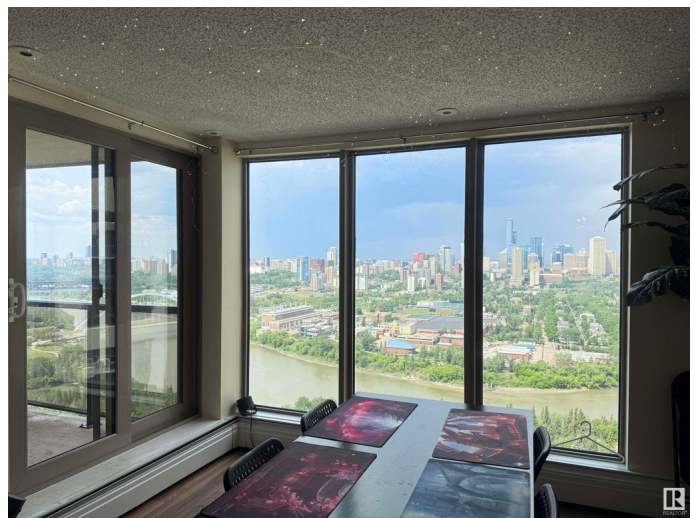
Stunning Million-Dollar View! Situated on the prestigious Saskatchewan Drive, this top floor 2-bedroom suite boasts the most breathtaking view in the entire building, overlooking the iconic Edmonton skyline, the North Saskatchewan River, the lush River Valley, and the striking Walterdale Bridge. The thoughtfully designed floor plan features 2 generously sized bedrooms, each with its own ensuite and panoramic city views. The spacious kitchen and dining area are perfect for entertaining, in-suite laundry and air conditioning (exclusive to top floor units) add comfort and convenience. Two secured, side-by-side parking stalls, a rare find. The building offers exceptional amenities, including a weight room, tennis courts, racquetball court, table tennis, and a steam room. It's impeccably clean, well-managed and highly secure, just steps from River Valley trails, Whyte Ave, the Old Strathcona Farmers' Market; quick access to Downtown and University of Alberta. Truly a vibrant location for active individuals.

Built in 1981

Essential Information

MLS® # E4441628

Price \$319,000



Bedrooms	2
Bathrooms	2.00
Full Baths	2
Square Footage	1,028
Acres	0.00
Year Built	1981
Type	Condo / Townhouse
Sub-Type	Apartment High Rise
Style	Single Level Apartment
Status	Active

Community Information

Address	10149 Saskatchewan Drive
Area	Edmonton
Subdivision	Strathcona
City	Edmonton
County	ALBERTA
Province	AB
Postal Code	T6E 6B6

Amenities

Amenities	Air Conditioner, Exercise Room, Parking-Extra, Party Room, Racquet Courts, Recreation Room/Centre, Secured Parking, Security Door, Security Personnel, Social Rooms, Sprinkler System-Fire, Tennis Courts
Parking	Parkade

Interior

Appliances	Dishwasher-Built-In, Microwave Hood Fan, Refrigerator, Stove-Electric
Heating	Baseboard, Hot Water, Natural Gas
# of Stories	20
Stories	1
Has Basement	Yes
Basement	None, No Basement

Exterior

Exterior	Concrete, Stone, Stucco
Exterior Features	Golf Nearby, Landscaped, Park/Reserve, Playground Nearby, Public Swimming Pool, Public Transportation, River Valley View, River View, Schools, Shopping Nearby, View City, View Downtown, See Remarks

Roof	Tar & Gravel
Construction	Concrete, Stone, Stucco
Foundation	Concrete Perimeter

Additional Information

Date Listed	June 11th, 2025
Days on Market	4
Zoning	Zone 15
Condo Fee	\$848

DATA IS DEEMED RELIABLE BUT IS NOT GUARANTEED ACCURATE BY THE REALTORS® ASSOCIATION OF EDMONTON. COPYRIGHT 2025 BY THE REALTORS® ASSOCIATION OF EDMONTON. ALL RIGHTS RESERVED. Trademarks are owned or controlled by the Canadian Real Estate Association (CREA) and identify real estate professionals who are members of CREA (REALTOR®, REALTORS®) and/or the quality of services they provide (MLS®, Multiple Listing Service®)

Listing information last updated on June 15th, 2025 at 9:17pm MDT