

\$244,000 - 15-3 Grove Meadows Drive, Spruce Grove

MLS® #E4446725

\$244,000

3 Bedroom, 1.50 Bathroom, 1,150 sqft

Condo / Townhouse on 0.00 Acres

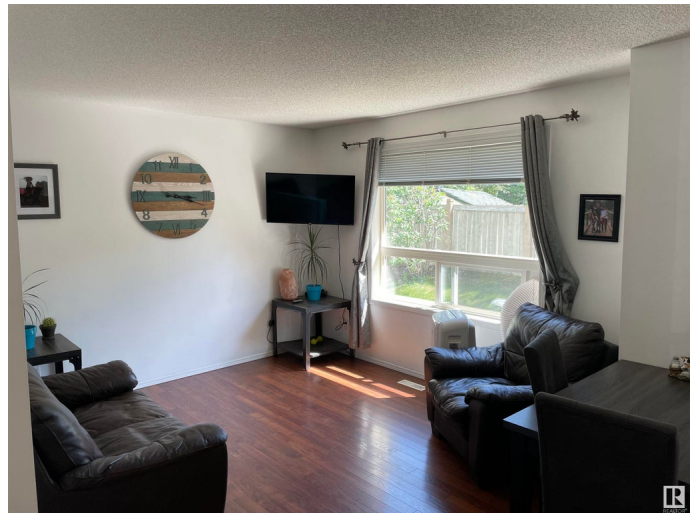
Lakewood_SPGR, Spruce Grove, AB

With one of the best locations in the complex this 3 bedroom townhome with south facing rear yard and deck provides a sunny and private setting. Upon entry you'll be greeted by an open welcoming entry, 1/2 bath, livingroom and spacious kitchen. Also the entry to a spacious single garage with storage space. The upper level has 3 bedrooms and a 4 pce bath. The basement has a laundry area, plumbing for a bath and future development. The complex is in a great location with highway access in 5 minutes as well as shopping, schools, buses and walking trails. With possession very negotiable you can be in almost as soon as you wish!

Built in 2003

Essential Information

MLS® #	E4446725
Price	\$244,000
Bedrooms	3
Bathrooms	1.50
Full Baths	1
Half Baths	1
Square Footage	1,150
Acres	0.00
Year Built	2003
Type	Condo / Townhouse



Sub-Type	Townhouse
Style	2 Storey
Status	Active

Community Information

Address	15-3 Grove Meadows Drive
Area	Spruce Grove
Subdivision	Lakewood_SPGR
City	Spruce Grove
County	ALBERTA
Province	AB
Postal Code	T7X 4L9

Amenities

Amenities	Deck
Parking	Single Garage Attached

Interior

Appliances	Dishwasher-Built-In, Garage Control, Garage Opener, Refrigerator, Stove-Electric, Window Coverings
Heating	Forced Air-1, Natural Gas
Stories	2
Has Basement	Yes
Basement	Full, Unfinished

Exterior

Exterior	Wood, Vinyl
Exterior Features	Flat Site, Golf Nearby, Landscaped, Public Transportation, Schools, Shopping Nearby
Roof	Asphalt Shingles
Construction	Wood, Vinyl
Foundation	Concrete Perimeter

Additional Information

Date Listed	July 9th, 2025
Days on Market	13
Zoning	Zone 91
Condo Fee	\$360

DATA IS DEEMED RELIABLE BUT IS NOT GUARANTEED ACCURATE BY THE REALTORS® ASSOCIATION OF EDMONTON. COPYRIGHT 2025 BY THE REALTORS® ASSOCIATION OF EDMONTON. ALL RIGHTS

RESERVED.Trademarks are owned or controlled by the Canadian Real Estate Association (CREA) and identify real estate professionals who are members of CREA (REALTOR®, REALTORS®) and/or the quality of services they provide (MLS®, Multiple Listing Service®)

Listing information last updated on July 22nd, 2025 at 6:32pm MDT