

\$839,000 - 45 Edgewater Terrace, St. Albert

MLS® #E4446973

\$839,000

3 Bedroom, 3.50 Bathroom, 1,510 sqft

Single Family on 0.00 Acres

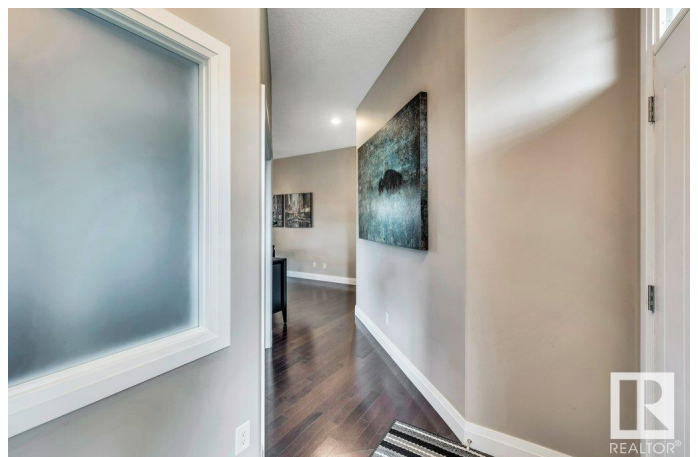
Erin Ridge North, St. Albert, AB

Welcome home to this beautiful 1510 sqft executive walk-out bungalow backing a tranquil pond with a sunny south-facing backyard and stunning landscaping. Enjoy outdoor living with gas hookups on both upper and lower decks, plus a shade enclosure on the lower level. The main floor features hardwood flooring, a spacious kitchen, bright living room with gas fireplace, office, 2 pc bathroom and convenient laundry with sink. The primary bedroom offers a 5 pc ensuite with jetted tub and large walk-in closet. The fully finished walk-out basement has in-floor heating, a large rec room with wet bar and gas fireplace, 2 bedrooms, exercise room, and a 4 pc bath. Triple attached garage completes this incredible home. A/C, Hunter Douglas blinds throughout. Great location - close to trails, shopping and schools!

Built in 2012

Essential Information

MLS® #	E4446973
Price	\$839,000
Bedrooms	3
Bathrooms	3.50
Full Baths	3
Half Baths	1
Square Footage	1,510



Acres	0.00
Year Built	2012
Type	Single Family
Sub-Type	Detached Single Family
Style	Bungalow
Status	Active

Community Information

Address	45 Edgewater Terrace
Area	St. Albert
Subdivision	Erin Ridge North
City	St. Albert
County	ALBERTA
Province	AB
Postal Code	T8N 4G7

Amenities

Amenities	Air Conditioner, Deck, No Animal Home, No Smoking Home, Walkout Basement, Wet Bar, Natural Gas BBQ Hookup
Parking	Triple Garage Attached
Is Waterfront	Yes

Interior

Interior Features	ensuite bathroom
Appliances	Air Conditioning-Central, Dishwasher-Built-In, Dryer, Garage Control, Garage Opener, Microwave Hood Fan, Refrigerator, Storage Shed, Stove-Electric, Washer
Heating	Forced Air-1, Natural Gas
Fireplace	Yes
Fireplaces	Mantel
Stories	2
Has Basement	Yes
Basement	Full, Finished

Exterior

Exterior	Wood, Stone, Vinyl
Exterior Features	Backs Onto Lake, Fenced, Landscaped, Shopping Nearby
Roof	Asphalt Shingles
Construction	Wood, Stone, Vinyl

Foundation Concrete Perimeter

Additional Information

Date Listed July 10th, 2025

Days on Market 12

Zoning Zone 24

DATA IS DEEMED RELIABLE BUT IS NOT GUARANTEED ACCURATE BY THE REALTORS® ASSOCIATION OF EDMONTON. COPYRIGHT 2025 BY THE REALTORS® ASSOCIATION OF EDMONTON. ALL RIGHTS RESERVED.Trademarks are owned or controlled by the Canadian Real Estate Association (CREA) and identify real estate professionals who are members of CREA (REALTOR®, REALTORS®) and/or the quality of services they provide (MLS®, Multiple Listing Service®)

Listing information last updated on July 21st, 2025 at 9:31pm MDT