

\$639,900 - 21937 94a Avenue, Edmonton

MLS® #E4448114

\$639,900

3 Bedroom, 2.50 Bathroom, 2,191 sqft
Single Family on 0.00 Acres

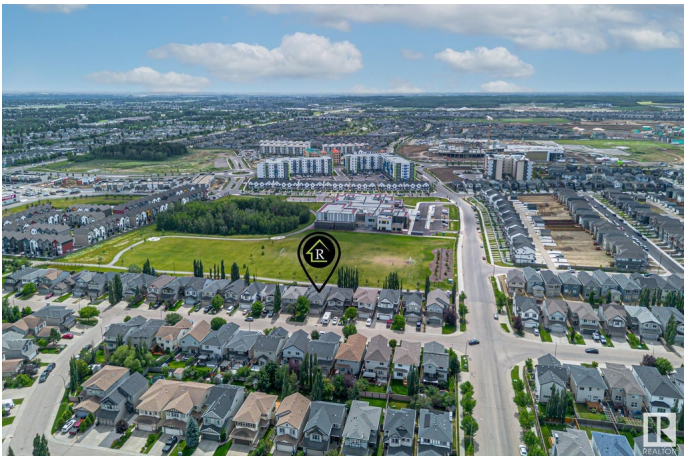
Secord, Edmonton, AB

Welcome to your family’s next chapter BACKING GREEN SPACE & SCHOOL! This stylish ORIGINAL OWNER 2192 sqft 2-storey offers space to grow with 3 bedrooms + bonus room up, a main floor den, and walk-through pantry with laundry. Backing a K-9 Catholic school and soccer field, with parks, shops, and the soon-to-open rec centre all within walking distance. The oversized garage fits a full-size truck, with added height, rough-ins for gas and hot/cold water, and extra storage. Inside, enjoy hardwood and tile flooring, custom kitchen/dining tilework, built-in desk, shutter-style blinds, central vacuum and thoughtful touches throughout. The spacious primary suite features hardwood floors, a walk-in closet, and a bright ensuite with separate tub and shower. Upgrades include attic insulation (2024), A/C (2023), newer appliances (2022), built-in audio, Exterior shed & phantom screen. A move-in-ready home built for real family living!

Built in 2009

Essential Information

MLS® #	E4448114
Price	\$639,900
Bedrooms	3
Bathrooms	2.50



Full Baths	2
Half Baths	1
Square Footage	2,191
Acres	0.00
Year Built	2009
Type	Single Family
Sub-Type	Detached Single Family
Style	2 Storey
Status	Active

Community Information

Address	21937 94a Avenue
Area	Edmonton
Subdivision	Secord
City	Edmonton
County	ALBERTA
Province	AB
Postal Code	T5T 1N1

Amenities

Amenities	Air Conditioner, Ceiling 9 ft., Deck, No Animal Home, No Smoking Home, See Remarks, Natural Gas BBQ Hookup
Parking	Double Garage Attached, Over Sized

Interior

Interior Features	ensuite bathroom
Appliances	Air Conditioning-Central, Dishwasher-Built-In, Dryer, Garage Control, Garage Opener, Refrigerator, Stove-Gas, Vacuum Systems, Washer, Window Coverings
Heating	Forced Air-1, Natural Gas
Fireplace	Yes
Fireplaces	Insert
Stories	2
Has Basement	Yes
Basement	Full, Unfinished

Exterior

Exterior	Wood, Stone, Vinyl
Exterior Features	Backs Onto Park/Trees, Fenced, Golf Nearby, Landscaped, Playground

	Nearby, Public Transportation, Schools, Shopping Nearby, See Remarks
Roof	Asphalt Shingles
Construction	Wood, Stone, Vinyl
Foundation	Concrete Perimeter

Additional Information

Date Listed	July 16th, 2025
Days on Market	15
Zoning	Zone 58

DATA IS DEEMED RELIABLE BUT IS NOT GUARANTEED ACCURATE BY THE REALTORS® ASSOCIATION OF EDMONTON. COPYRIGHT 2025 BY THE REALTORS® ASSOCIATION OF EDMONTON. ALL RIGHTS RESERVED. Trademarks are owned or controlled by the Canadian Real Estate Association (CREA) and identify real estate professionals who are members of CREA (REALTOR®, REALTORS®) and/or the quality of services they provide (MLS®, Multiple Listing Service®)

Listing information last updated on July 31st, 2025 at 4:18pm MDT