

\$125,000 - 201 24 Alpine Place, St. Albert

MLS® #E4448684

\$125,000

2 Bedroom, 1.00 Bathroom, 845 sqft

Condo / Townhouse on 0.00 Acres

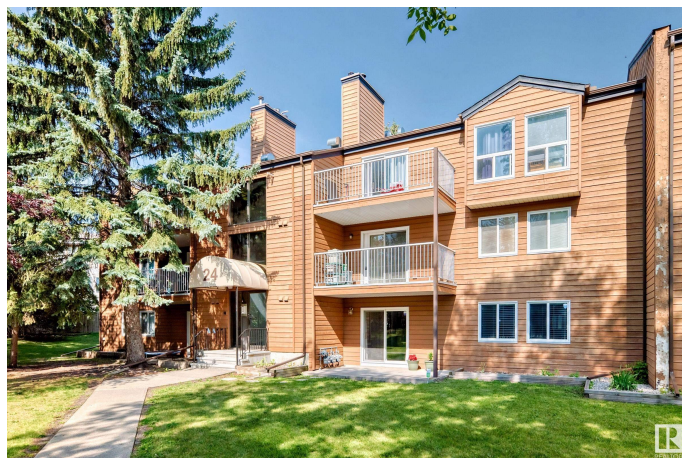
Akinsdale, St. Albert, AB

Welcome to your new home -- VERY WELL MAINTAINED/UPGRADED 2 bedroom + 1 bath close to all amenities. This home has NEW CARPET, VINYL PLANK flooring, LIGHT FIXTURES, and freshly painted walls. Very open plan with kitchen adjacent to dining and living room. Beautiful brick surround wood burning fireplace in living room. Extra in-suite storage room. Common laundry room a few steps down the hall (same floor). This neighbourhood also has mature trees and amazing parks and trails and is close to Elmer S. Gish K-9 School, parks. Location offers quick, easy access to the Anthony Henday, Alpine Park pickle ball courts, rink, sports field and playground! TWO assigned PARKING STALLS (#11 + #12) just outside entrance plus numerous visitor parking stalls for your guests.

Built in 1982

Essential Information

MLS® #	E4448684
Price	\$125,000
Bedrooms	2
Bathrooms	1.00
Full Baths	1
Square Footage	845
Acres	0.00
Year Built	1982



Type	Condo / Townhouse
Sub-Type	Lowrise Apartment
Style	Single Level Apartment
Status	Active

Community Information

Address	201 24 Alpine Place
Area	St. Albert
Subdivision	Akinsdale
City	St. Albert
County	ALBERTA
Province	AB
Postal Code	T8N 3Y2

Amenities

Amenities	Parking-Plug-Ins, Parking-Visitor, Security Door, Storage-In-Suite
Parking Spaces	2
Parking	2 Outdoor Stalls

Interior

Appliances	Dishwasher-Built-In, Refrigerator, Stove-Electric
Heating	Forced Air-1, Natural Gas
Fireplace	Yes
Fireplaces	Brick Facing
# of Stories	3
Stories	1
Has Basement	Yes
Basement	None, No Basement

Exterior

Exterior	Wood
Exterior Features	Schools, Shopping Nearby
Roof	Asphalt Shingles
Construction	Wood
Foundation	Concrete Perimeter

Additional Information

Date Listed	July 18th, 2025
Days on Market	58

Zoning	Zone 24
Condo Fee	\$522

DATA IS DEEMED RELIABLE BUT IS NOT GUARANTEED ACCURATE BY THE REALTORS® ASSOCIATION OF EDMONTON. COPYRIGHT 2025 BY THE REALTORS® ASSOCIATION OF EDMONTON. ALL RIGHTS RESERVED. Trademarks are owned or controlled by the Canadian Real Estate Association (CREA) and identify real estate professionals who are members of CREA (REALTOR®, REALTORS®) and/or the quality of services they provide (MLS®, Multiple Listing Service®)

Listing information last updated on September 14th, 2025 at 4:17pm MDT