

\$239,000 - 307 6070 Schonsee Way, Edmonton

MLS® #E4449567

\$239,000

2 Bedroom, 2.00 Bathroom, 969 sqft

Condo / Townhouse on 0.00 Acres

Schonsee, Edmonton, AB

This updated 2 bed, 2 bath condo features NEW FLOORING throughout and 2 TITLED PARKING STALLS (1 heated underground + 1 surface stall near the entrance). The bright and expansive open-concept layout includes a warm-toned kitchen with ample cabinetry, black appliances, and a raised breakfast bar. The spacious living and dining areas offer plenty of room to relax or entertain. The primary suite boasts a MASSIVE walk-in closet and 3-piece ensuite, while the second bedroom and 4-piece bathroom are located on the opposite side of the unit for added privacy. Enjoy the covered balcony with privacy glass and natural gas BBQ hookup. Additional highlights include in-suite laundry, a fitness centre, social room, and secure underground parking. Condo fees include heat & water. Located near Lake Schonsee, parks, trails, schools, shopping, transit, and with quick access to Anthony Henday. A perfect blend of comfort, convenience, and value—this one checks all the boxes!

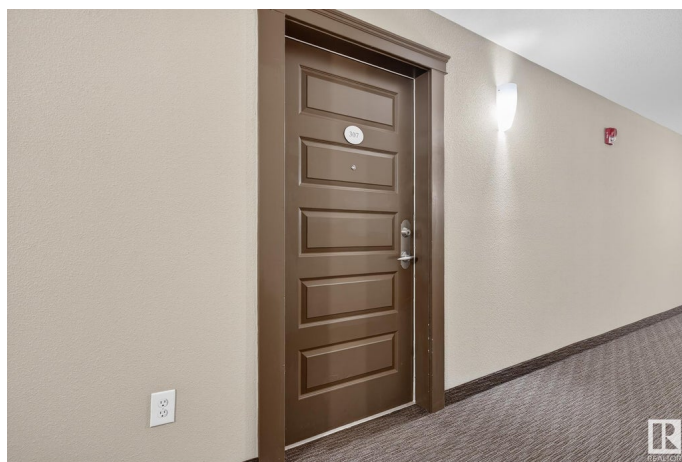
Built in 2011

Essential Information

MLS® # E4449567

Price \$239,000

Bedrooms 2



Bathrooms	2.00
Full Baths	2
Square Footage	969
Acres	0.00
Year Built	2011
Type	Condo / Townhouse
Sub-Type	Lowrise Apartment
Style	Single Level Apartment
Status	Active

Community Information

Address	307 6070 Schonsee Way
Area	Edmonton
Subdivision	Schonsee
City	Edmonton
County	ALBERTA
Province	AB
Postal Code	T5Z 0G8

Amenities

Amenities	Exercise Room, Intercom, Parking-Visitor, Party Room, Secured Parking, Security Door
Parking Spaces	2
Parking	Stall, Underground

Interior

Interior Features	ensuite bathroom
Appliances	Dishwasher-Built-In, Refrigerator, Stacked Washer/Dryer, Stove-Electric
Heating	Baseboard, Natural Gas
# of Stories	4
Stories	1
Has Basement	Yes
Basement	None, No Basement

Exterior

Exterior	Wood, Stone, Vinyl
Exterior Features	Public Transportation, Schools, Shopping Nearby
Roof	Asphalt Shingles
Construction	Wood, Stone, Vinyl

Foundation Concrete Perimeter

Additional Information

Date Listed July 24th, 2025
Days on Market 6
Zoning Zone 28
Condo Fee \$466

DATA IS DEEMED RELIABLE BUT IS NOT GUARANTEED ACCURATE BY THE REALTORS® ASSOCIATION OF EDMONTON. COPYRIGHT 2025 BY THE REALTORS® ASSOCIATION OF EDMONTON. ALL RIGHTS RESERVED.Trademarks are owned or controlled by the Canadian Real Estate Association (CREA) and identify real estate professionals who are members of CREA (REALTOR®, REALTORS®) and/or the quality of services they provide (MLS®, Multiple Listing Service®)
Listing information last updated on July 30th, 2025 at 1:18pm MDT