

\$599,900 - 12 Elsinore Place, Edmonton

MLS® #E4450040

\$599,900

5 Bedroom, 3.50 Bathroom, 2,239 sqft

Single Family on 0.00 Acres

Elsinore, Edmonton, AB

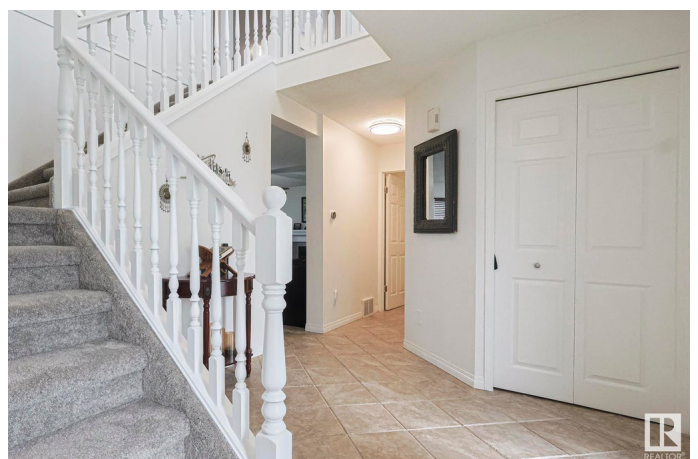
TERRIFIC FAMILY 2 STOREY! This spacious 5 bedroom, 4 bath home sits on a massive lot in desirable Elsinore. Featuring maple hardwood floors & over 2200 sq.ft on 2 levels with a developed basement – there is plenty of room for the whole family. The bright and open foyer opens to the living & formal dining area. The sunny kitchen has quality s/s appliances, large island, plenty of counterspace & breakfast nook opening to the backyard. Step down into the sunken family room which has nice big windows & a fireplace. The main level is completed with a 2 pce bath & laundry room. Upstairs has 3 generous bedrooms, family bathroom & large primary suite with a bay window, w/i closet & ensuite, corner tub, separate glass shower & double sinks. The professionally finished basement offers lots more living space with 2 additional bedrooms, bath & massive rec room. The attractive exterior has a cedar shake roof, fenced yard & patio. Close to major shopping & just minutes from CFB Edmonton – the location is fantastic!

Built in 1991

Essential Information

MLS® # E4450040

Price \$599,900



Bedrooms	5
Bathrooms	3.50
Full Baths	3
Half Baths	1
Square Footage	2,239
Acres	0.00
Year Built	1991
Type	Single Family
Sub-Type	Detached Single Family
Style	2 Storey
Status	Active

Community Information

Address	12 Elsinore Place
Area	Edmonton
Subdivision	Elsinore
City	Edmonton
County	ALBERTA
Province	AB
Postal Code	T5X 5W3

Amenities

Amenities	Detectors Smoke, Patio, See Remarks
Parking Spaces	4
Parking	Double Garage Attached

Interior

Interior Features	ensuite bathroom
Appliances	Dishwasher-Built-In, Dryer, Garage Opener, Refrigerator, Stove-Electric, Washer
Heating	Forced Air-1, Natural Gas
Fireplace	Yes
Fireplaces	Mantel, Tile Surround
Stories	3
Has Basement	Yes
Basement	Full, Finished

Exterior

Exterior	Wood, Vinyl
----------	-------------

Exterior Features	Fenced, Flat Site, Landscaped, Playground Nearby, Public Transportation, Schools, Shopping Nearby, See Remarks
Roof	Cedar Shakes
Construction	Wood, Vinyl
Foundation	Concrete Perimeter

Additional Information

Date Listed	July 28th, 2025
Days on Market	2
Zoning	Zone 27

DATA IS DEEMED RELIABLE BUT IS NOT GUARANTEED ACCURATE BY THE REALTORS® ASSOCIATION OF EDMONTON. COPYRIGHT 2025 BY THE REALTORS® ASSOCIATION OF EDMONTON. ALL RIGHTS RESERVED.Trademarks are owned or controlled by the Canadian Real Estate Association (CREA) and identify real estate professionals who are members of CREA (REALTOR®, REALTORS®) and/or the quality of services they provide (MLS®, Multiple Listing Service®)

Listing information last updated on July 30th, 2025 at 2:02pm MDT