

\$267,900 - 26 451 Hyndman Crescent, Edmonton

MLS® #E4450045

\$267,900

2 Bedroom, 2.50 Bathroom, 1,265 sqft

Condo / Townhouse on 0.00 Acres

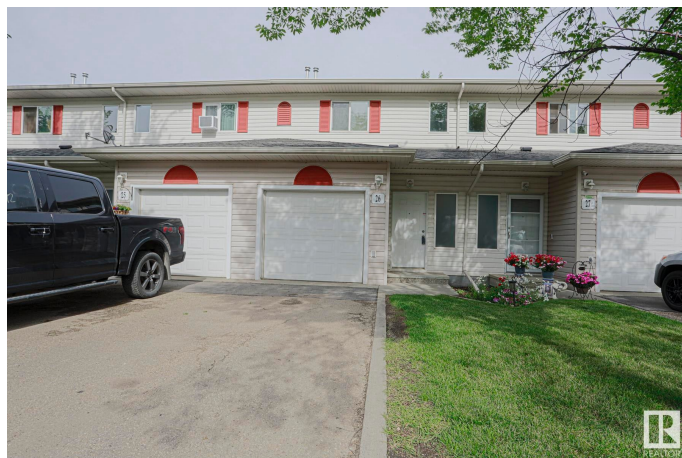
Canon Ridge, Edmonton, AB

This townhouse is located in the complex of SHADOW RIDGE in the family-oriented community of CANON RIDGE. This home features an open-concept layout with a spacious living room, dining area and a kitchen with all your essential appliances and BREAKFAST BAR. The upper level has a large master bedroom with a walk-in closet and ENSUITE full bathroom. There is another bedroom and a full bathroom. The basement features a large RECREATIONAL ROOM for additional living space. Enjoy the convenience of an ATTACHED single garage and the summers on your dedicated deck facing a large green space. This home is close to all amenities including schools, shopping, restaurants, walking trails, public transportation and major roadways like YELLOWHEAD and ANTHONY HENDAY.

Built in 2005

Essential Information

| | |
|----------------|-----------|
| MLS® # | E4450045 |
| Price | \$267,900 |
| Bedrooms | 2 |
| Bathrooms | 2.50 |
| Full Baths | 2 |
| Half Baths | 1 |
| Square Footage | 1,265 |



| | |
|------------|-------------------|
| Acres | 0.00 |
| Year Built | 2005 |
| Type | Condo / Townhouse |
| Sub-Type | Townhouse |
| Style | 2 Storey |
| Status | Active |

Community Information

| | |
|-------------|-------------------------|
| Address | 26 451 Hyndman Crescent |
| Area | Edmonton |
| Subdivision | Canon Ridge |
| City | Edmonton |
| County | ALBERTA |
| Province | AB |
| Postal Code | T5A 5J3 |

Amenities

| | |
|-----------|------------------------------|
| Amenities | Parking-Visitor, See Remarks |
| Parking | Single Garage Attached |

Interior

| | |
|-------------------|--|
| Interior Features | ensuite bathroom |
| Appliances | Dishwasher-Built-In, Dryer, Refrigerator, Stove-Electric, Washer |
| Heating | Forced Air-1, Natural Gas |
| Stories | 2 |
| Has Basement | Yes |
| Basement | Full, Partially Finished |

Exterior

| | |
|-------------------|---|
| Exterior | Wood, Vinyl |
| Exterior Features | Playground Nearby, Public Transportation, Schools, Shopping Nearby, See Remarks |
| Roof | Asphalt Shingles |
| Construction | Wood, Vinyl |
| Foundation | Concrete Perimeter |

Additional Information

| | |
|----------------|-----------------|
| Date Listed | July 28th, 2025 |
| Days on Market | 3 |

| | |
|-----------|---------|
| Zoning | Zone 35 |
| Condo Fee | \$389 |

DATA IS DEEMED RELIABLE BUT IS NOT GUARANTEED ACCURATE BY THE REALTORS® ASSOCIATION OF EDMONTON. COPYRIGHT 2025 BY THE REALTORS® ASSOCIATION OF EDMONTON. ALL RIGHTS RESERVED. Trademarks are owned or controlled by the Canadian Real Estate Association (CREA) and identify real estate professionals who are members of CREA (REALTOR®, REALTORS®) and/or the quality of services they provide (MLS®, Multiple Listing Service®)

Listing information last updated on July 31st, 2025 at 7:32am MDT