

\$144,900 - 307 42 Alpine Place, St. Albert

MLS® #E4450289

\$144,900

2 Bedroom, 1.00 Bathroom, 879 sqft

Condo / Townhouse on 0.00 Acres

Akinsdale, St. Albert, AB

#rd floor (top floor) 2 bedroom 1 bathroom with balcony and view of park/schoolyard.

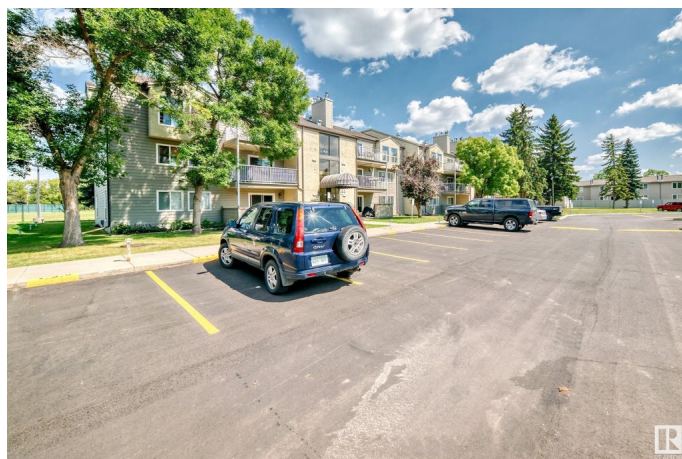
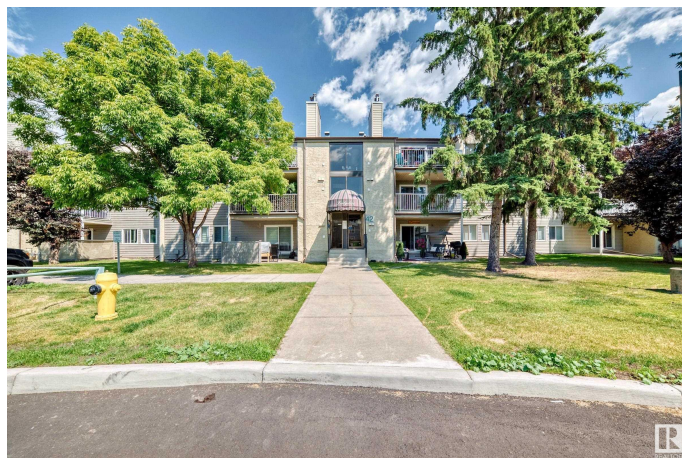
Built in 1982

Essential Information

| | |
|----------------|------------------------|
| MLS® # | E4450289 |
| Price | \$144,900 |
| Bedrooms | 2 |
| Bathrooms | 1.00 |
| Full Baths | 1 |
| Square Footage | 879 |
| Acres | 0.00 |
| Year Built | 1982 |
| Type | Condo / Townhouse |
| Sub-Type | Lowrise Apartment |
| Style | Single Level Apartment |
| Status | Active |

Community Information

| | |
|-------------|---------------------|
| Address | 307 42 Alpine Place |
| Area | St. Albert |
| Subdivision | Akinsdale |
| City | St. Albert |
| County | ALBERTA |
| Province | AB |
| Postal Code | T8N 3Y2 |



Amenities

| | |
|-----------|---|
| Amenities | Hot Water Natural Gas, Security Door, Vinyl Windows |
| Parking | 2 Outdoor Stalls |

Interior

| | |
|--------------|--|
| Appliances | Dishwasher-Built-In, Dryer, Refrigerator, Stove-Electric, Washer |
| Heating | Forced Air-1, Natural Gas |
| # of Stories | 3 |
| Stories | 1 |
| Has Basement | Yes |
| Basement | None, No Basement |

Exterior

| | |
|-------------------|-----------------------|
| Exterior | Wood |
| Exterior Features | Backs Onto Park/Trees |
| Roof | Asphalt Shingles |
| Construction | Wood |
| Foundation | Concrete Perimeter |

Additional Information

| | |
|----------------|-----------------|
| Date Listed | July 30th, 2025 |
| Days on Market | 2 |
| Zoning | Zone 24 |
| Condo Fee | \$495 |

DATA IS DEEMED RELIABLE BUT IS NOT GUARANTEED ACCURATE BY THE REALTORS® ASSOCIATION OF EDMONTON. COPYRIGHT 2025 BY THE REALTORS® ASSOCIATION OF EDMONTON. ALL RIGHTS RESERVED. Trademarks are owned or controlled by the Canadian Real Estate Association (CREA) and identify real estate professionals who are members of CREA (REALTOR®, REALTORS®) and/or the quality of services they provide (MLS®, Multiple Listing Service®)

Listing information last updated on August 1st, 2025 at 4:32am MDT