

\$660,000 - 17028 78 Street, Edmonton

MLS® #E4457048

\$660,000

5 Bedroom, 3.50 Bathroom, 2,700 sqft
Single Family on 0.00 Acres

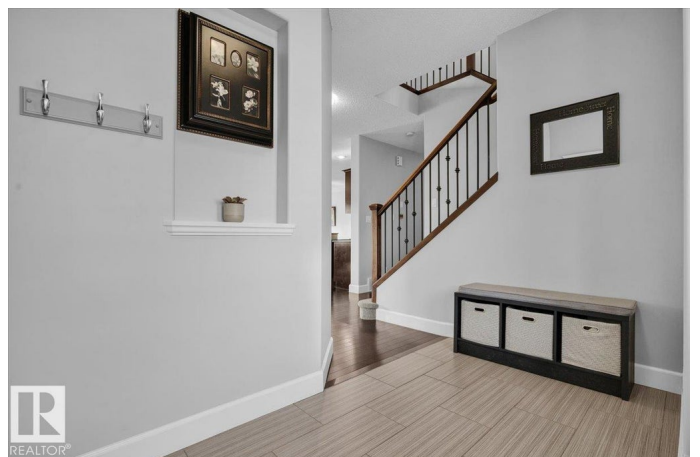
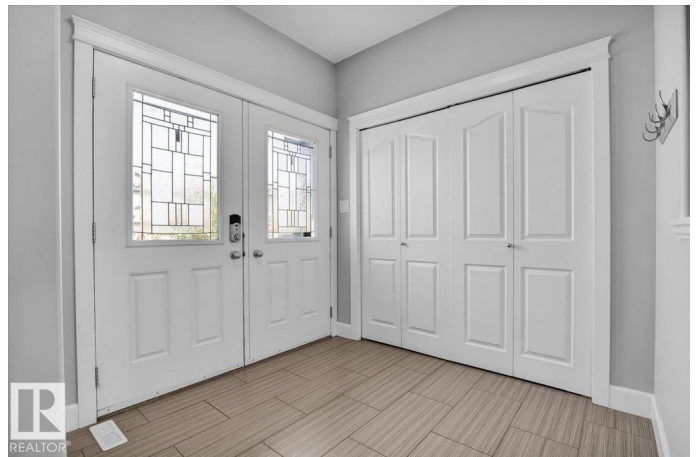
Schonsee, Edmonton, AB

UPGRADED, ORIGINAL OWNER, BEDROCK-BUILT HOME. Upon entering, youâ€™ll love the natural light from large windows along the back & sides of the house. The main floor features an open-concept layout w/ hardwood floors & a gas fireplace. The kitchen includes quartz countertops, a tiled backsplash, a peninsula at eating-bar height, & a walkthrough pantry. The dining/living room overlooks your backyard w/ a two-tiered deck & pergola. Upstairs has a large bonus room w/ vaulted ceilings, a built-in speaker system & projector! The primary bedroom fits a king-sized bed & includes his & hers closets, plus a spa-like 5-piece ensuite. The upper level is completed w/ two more bedrooms, a 4-piece bathroom, & upstairs laundry. The basement is fully finished w/ 9 ft ceilings, a large rec room, two bedrooms & another full bathroom. Additional upgrades: newer stove, dishwasher & washer, tankless hot water, A/C, central vac, rough-in for basement laundry, heated/oversized double garage & MORE!

Built in 2011

Essential Information

MLS® #	E4457048
Price	\$660,000



Bedrooms	5
Bathrooms	3.50
Full Baths	3
Half Baths	1
Square Footage	2,700
Acres	0.00
Year Built	2011
Type	Single Family
Sub-Type	Detached Single Family
Style	2 Storey
Status	Active

Community Information

Address	17028 78 Street
Area	Edmonton
Subdivision	Schonsee
City	Edmonton
County	ALBERTA
Province	AB
Postal Code	T5Z 0E6

Amenities

Amenities	Air Conditioner, Deck, No Animal Home, No Smoking Home, Vinyl Windows
Parking Spaces	4
Parking	Double Garage Attached, Heated, Over Sized

Interior

Interior Features	ensuite bathroom
Appliances	Dishwasher-Built-In, Dryer, Garage Control, Hood Fan, Refrigerator, Stove-Electric, Vacuum Systems, Washer, Window Coverings
Heating	Forced Air-1, Natural Gas
Fireplace	Yes
Fireplaces	Tile Surround
Stories	3
Has Basement	Yes
Basement	Full, Finished

Exterior

Exterior	Wood, Vinyl
Exterior Features	Landscaped, Playground Nearby, Public Transportation, Schools, Shopping Nearby
Roof	Asphalt Shingles
Construction	Wood, Vinyl
Foundation	Concrete Perimeter

School Information

Elementary	Northmount/St.John B
Middle	Dickinsfield/J.J Bowlen
High	M.E.Lazerte/Arch. O'Leary

Additional Information

Date Listed	September 10th, 2025
Days on Market	4
Zoning	Zone 28

DATA IS DEEMED RELIABLE BUT IS NOT GUARANTEED ACCURATE BY THE REALTORS® ASSOCIATION OF EDMONTON. COPYRIGHT 2025 BY THE REALTORS® ASSOCIATION OF EDMONTON. ALL RIGHTS RESERVED. Trademarks are owned or controlled by the Canadian Real Estate Association (CREA) and identify real estate professionals who are members of CREA (REALTOR®, REALTORS®) and/or the quality of services they provide (MLS®, Multiple Listing Service®)

Listing information last updated on September 14th, 2025 at 10:47am MDT