

\$385,000 - 2687 Sir Arthur Currie Way, Edmonton

MLS® #E4457471

\$385,000

4 Bedroom, 3.50 Bathroom, 1,234 sqft

Condo / Townhouse on 0.00 Acres

Griesbach, Edmonton, AB

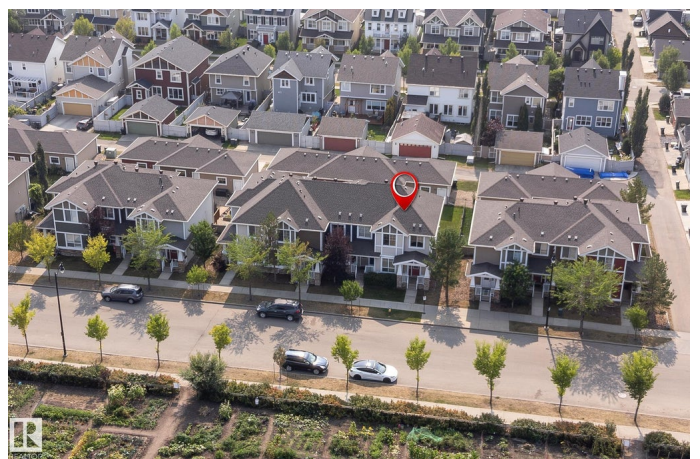
Discover this exceptional end-unit townhouse located in the centre of Edmonton's prestigious Griesbach community. Perfectly positioned across from the expansive 24-acre Maple Leaf Park, this home offers unobstructed park views and even a hilltop glimpse of downtown, creating a serene and scenic backdrop year-round. Designed for comfort and functionality, this home offers 4 bedrooms (including one in the fully finished basement) and 4 bathrooms, making it ideal for families or professionals. The functional layout includes an open-concept kitchen with granite countertops, stainless steel appliances, and a tankless hot water system for energy efficiency. A front den makes an excellent home office or study space. Upstairs, the spacious primary suite features a walk-in closet and private ensuite, while the additional bedrooms provide versatility for guests, kids, or hobbies. The home also boasts great curb appeal, a fenced backyard, and a double detached garage with back lane. Minutes from downtown!

Built in 2012

Essential Information

MLS® # E4457471

Price \$385,000



| | |
|----------------|-------------------|
| Bedrooms | 4 |
| Bathrooms | 3.50 |
| Full Baths | 3 |
| Half Baths | 1 |
| Square Footage | 1,234 |
| Acres | 0.00 |
| Year Built | 2012 |
| Type | Condo / Townhouse |
| Sub-Type | Townhouse |
| Style | 2 Storey |
| Status | Active |

Community Information

| | |
|-------------|----------------------------|
| Address | 2687 Sir Arthur Currie Way |
| Area | Edmonton |
| Subdivision | Griesbach |
| City | Edmonton |
| County | ALBERTA |
| Province | AB |
| Postal Code | T5E 6S8 |

Amenities

| | |
|-----------|----------------------------------------------------|
| Amenities | Air Conditioner, Ceiling 9 ft., Hot Water Tankless |
| Parking | Double Garage Detached |

Interior

| | |
|-------------------|-----------------------------------------------------------------------------------------------------------------------------------------------------------------|
| Interior Features | ensuite bathroom |
| Appliances | Air Conditioning-Central, Dishwasher-Built-In, Dryer, Garage Control, Garage Opener, Microwave Hood Fan, Refrigerator, Stove-Electric, Washer, Window Coverings |
| Heating | Forced Air-1, Natural Gas |
| Stories | 3 |
| Has Basement | Yes |
| Basement | Full, Finished |

Exterior

| | |
|-------------------|---------------------------------------------------|
| Exterior | Wood, Stone, Vinyl |
| Exterior Features | Back Lane, Backs Onto Park/Trees, Fenced, Schools |
| Roof | Asphalt Shingles |

| | |
|--------------|--------------------|
| Construction | Wood, Stone, Vinyl |
| Foundation | Concrete Perimeter |

School Information

| | |
|------------|-------------------------|
| Elementary | Major General Griesbach |
|------------|-------------------------|

Additional Information

| | |
|----------------|----------------------|
| Date Listed | September 12th, 2025 |
| Days on Market | 2 |
| Zoning | Zone 27 |
| Condo Fee | \$333 |

DATA IS DEEMED RELIABLE BUT IS NOT GUARANTEED ACCURATE BY THE REALTORS® ASSOCIATION OF EDMONTON. COPYRIGHT 2025 BY THE REALTORS® ASSOCIATION OF EDMONTON. ALL RIGHTS RESERVED.Trademarks are owned or controlled by the Canadian Real Estate Association (CREA) and identify real estate professionals who are members of CREA (REALTOR®, REALTORS®) and/or the quality of services they provide (MLS®, Multiple Listing Service®)

Listing information last updated on September 14th, 2025 at 2:32am MDT